



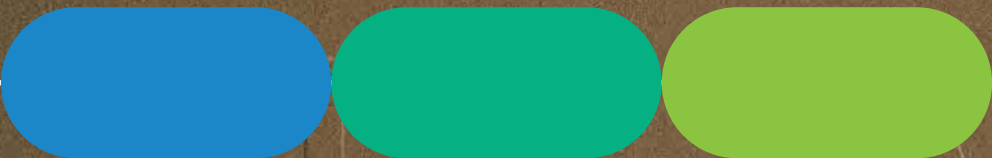
# BINGHATTI HAVEN



**AFS**  
REAL ESTATE  
STAY AHEAD, INVEST SMART



**db**  
DUBRICKS  
POSSIBILITIES ARE LIMITLESS





A close-up, high-contrast photograph of a woman's face, focusing on her right eye. She has light-colored eyes and is wearing heavy, shimmering orange and red eye makeup. Her expression is intense and focused. Above her eye, three horizontal, rounded rectangular ovals in blue, teal, and lime green are arranged in a row. The background is blurred, showing what appears to be a white architectural element.

Amidst the unrivalled energy and drive.  
A true symbol of renewal.



# A New Era in Dubai Sports City

Binghatti unveils Haven, its inaugural masterpiece in Dubai Sports City. A true place of its name, amidst the vibrant energy of a dynamic district. Haven is our ode to balance, a place where the pursuit of excellence provides moments of restoration and calm.



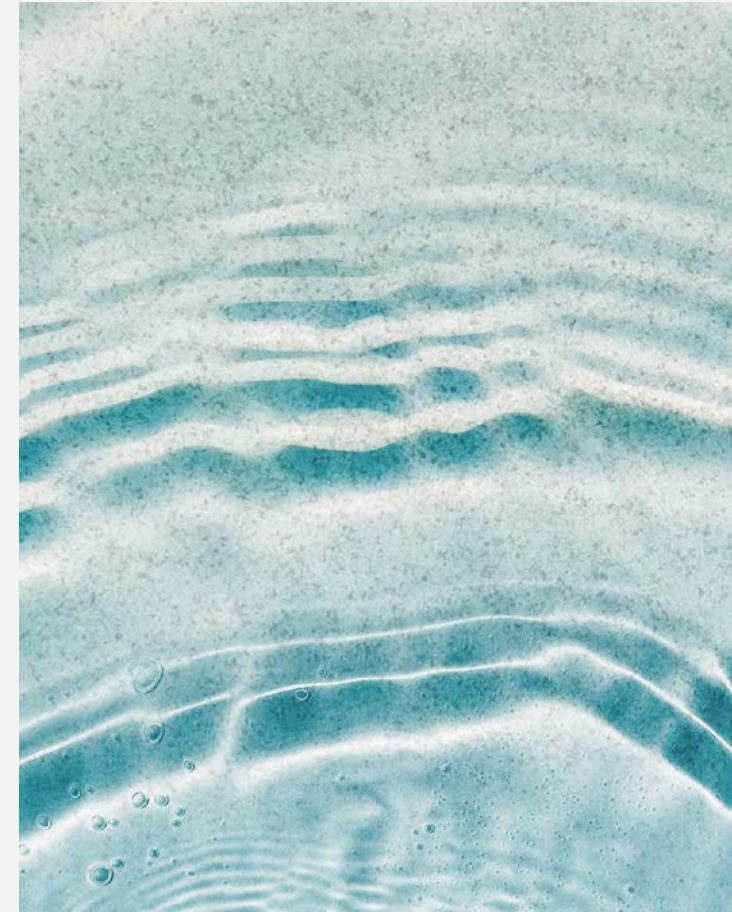








## TRANQUILITY



Find your centre, your focus, your breath.





# S E R E N I T Y



Reimagined. Restored.





# PROJECT FACTS

PROPERTY TYPE  
**RESIDENTIAL**

PLOT AREA  
**7,119.12 SQ.M (76,630 SQ.FT)**

DESCRIPTION  
**B + G + 3P + 26 RESIDENTIAL  
FLOORS + ROOF**

NUMBER OF UNITS  
**Studio: 117**  
**1 Bedroom: 154**  
**2 Bedroom: 217**  
**3 Bedroom: 13**

TOTAL UNITS  
**Residential Units: 501**







## Equilibrium Above All

Haven's design is a testament to Binghatti's architectural prowess. Its striking façade, a study in contrasts, seamlessly blends with the vibrant skyline of Dubai Sports City, yet stands apart with its striking and captivating presence. A closer look reveals the intricate details, the thoughtful design that speaks to a life lived in seeking a unique balance.



# Inside the court, Here and Now

Haven enjoys a strategic location in Dubai Sports City, with easy access to major road networks and public transportation. Explore the city's vibrant charm, from the iconic Burj Khalifa to the tranquil shores of Dubai Marina, all within effortless reach.



CITY CENTER  
ME'EIUSM



DUBAI  
AUTODROME



DUBAI HILLS  
MALL



KINGS COLLEGE  
HOSPITAL



MALL OF THE  
EMIRATES



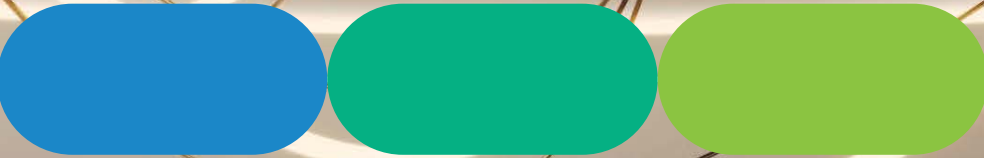
THE ELS CLUB  
DUBAI SPORTS CITY



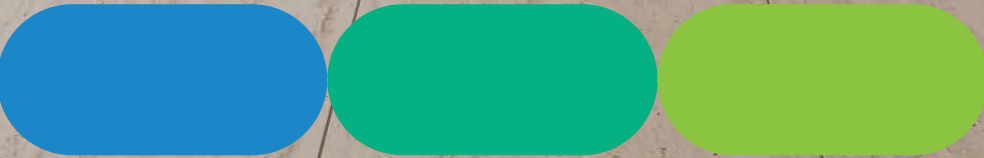
DUBAI INTERNATIONAL  
CRICKET STADIUM



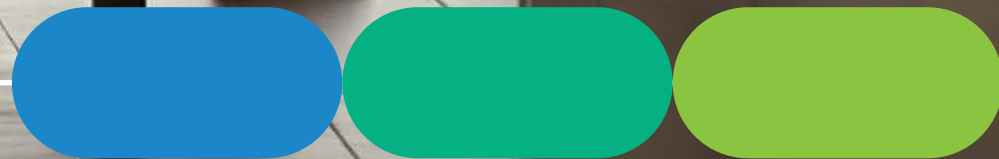




بن غاطي  
BINGHATTI







## A Place for the Discerning

Haven is more than a residence; it's a retreat from the everyday. Step into a world where every detail is crafted to invigorate and restore. Feel the weight of the world disperse as you immerse yourself in the calm that is your own private haven.



# For Those Who Step Up

Haven is a place where likeminded individuals can find a home that reflects their aspirations, a space that inspires and revitalises to the very core.







# BINGHATTI HAVEN

Delve deeper into the design philosophy behind Haven, where every element is carefully considered to create a harmonious way of life. Discover residences crafted with exquisite materials, from the cool touch of marble to the warmth of natural wood, each a testament to Binghatti's pursuit of perfection.



# Undisputed in Materiality and Comfort

Step into residences that redefine urban stride. Expansive windows frame breathtaking views of Dubai Sports City and beyond, while masterfully curated interiors, featuring the finest materials and finishes, create a haven for the senses. Every detail is designed to restore and renew.

- 1. Wood Veneer
- 2. Fluted Travertine
- 3. Feature Wall
- 4. Walls Porcelain Tiles
- 5. Floor Porcelain Tiles
- 6. Champaign Metal
- 7. Mirror





# Everyday Competition at Your Doorstep

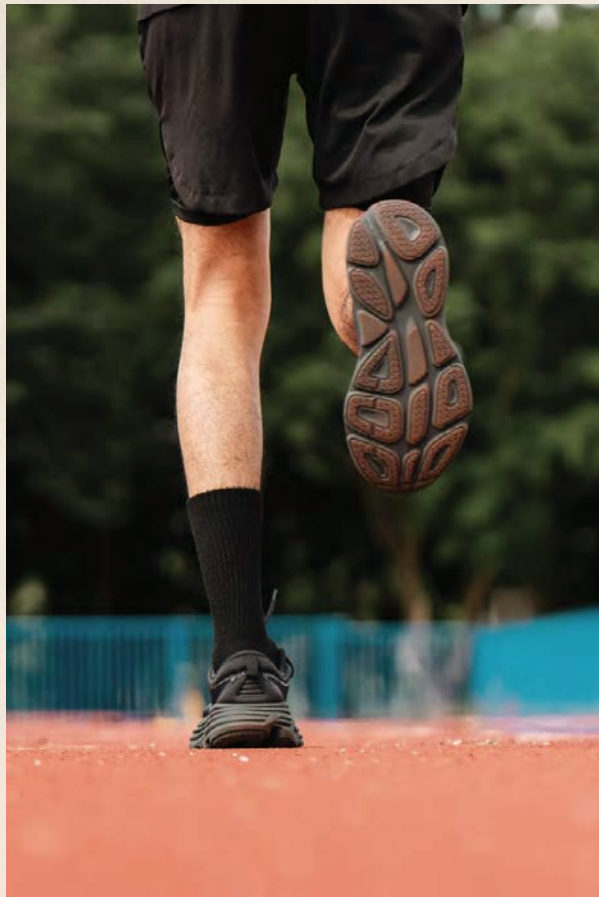
Haven offers a curated selection of amenities designed to enhance your every day and promote a sense of activity. Immerse yourself in the tranquility of the adult pool, unwind in the jacuzzi, or find your rhythm on the jogging track. Haven is first and foremost yours, a place to reconnect with yourself.



Paddle Court



Kids Aqua Pool



Jogging Tracks



Green Maze



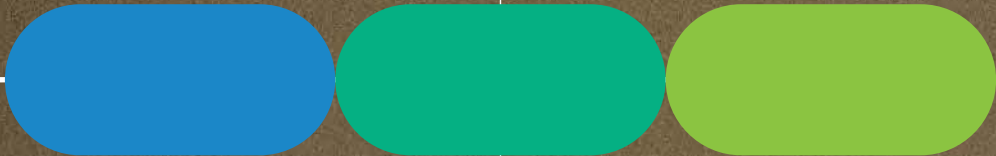
Basketball Court



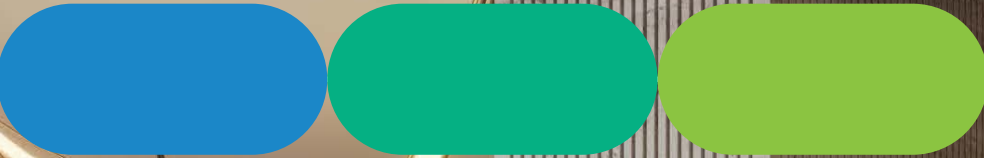


# FLOOR PLAN

Discover a range of thoughtfully designed floor plans to suit your individual needs and lifestyle. From studios to expansive family residences, Haven offers a space for everyone.



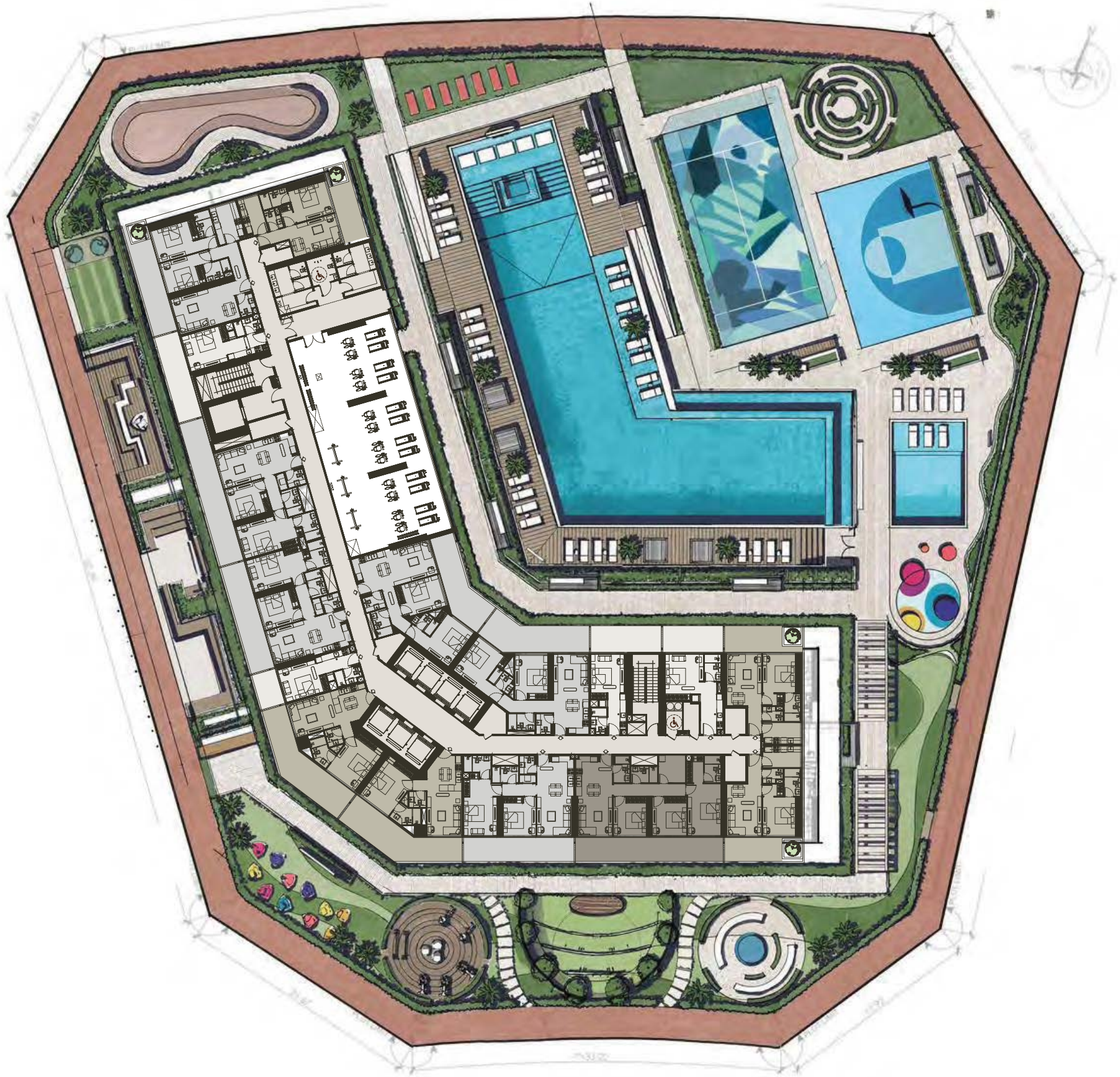






TYPICAL FLOOR PLAN  
1<sup>ST</sup> FLOOR

STUDIO	
AVERAGE AREA WITHOUT BALCONY	300 - 380 ft²
AVERAGE AREA WITH BALCONY	385 - 551 ft²
1 BEDROOM	
AVERAGE AREA WITHOUT BALCONY	585 - 658 ft²
AVERAGE AREA WITH BALCONY	774 - 975 ft²
2 BEDROOM	
AVERAGE AREA WITHOUT BALCONY	903 - 988 ft²
AVERAGE AREA WITH BALCONY	1137 -1378 ft²
3 BEDROOM	
AVERAGE AREA WITHOUT BALCONY	1218 ft²
AVERAGE AREA WITH BALCONY	1557 - 1609 ft²





## TYPICAL FLOOR PLAN 2<sup>ND</sup> FLOOR

## STUDIO

AVERAGE AREA WITHOUT BALCONY	300 - 380 ft <sup>2</sup>
AVERAGE AREA WITH BALCONY	385 - 551 ft <sup>2</sup>

## 1 BEDROOM

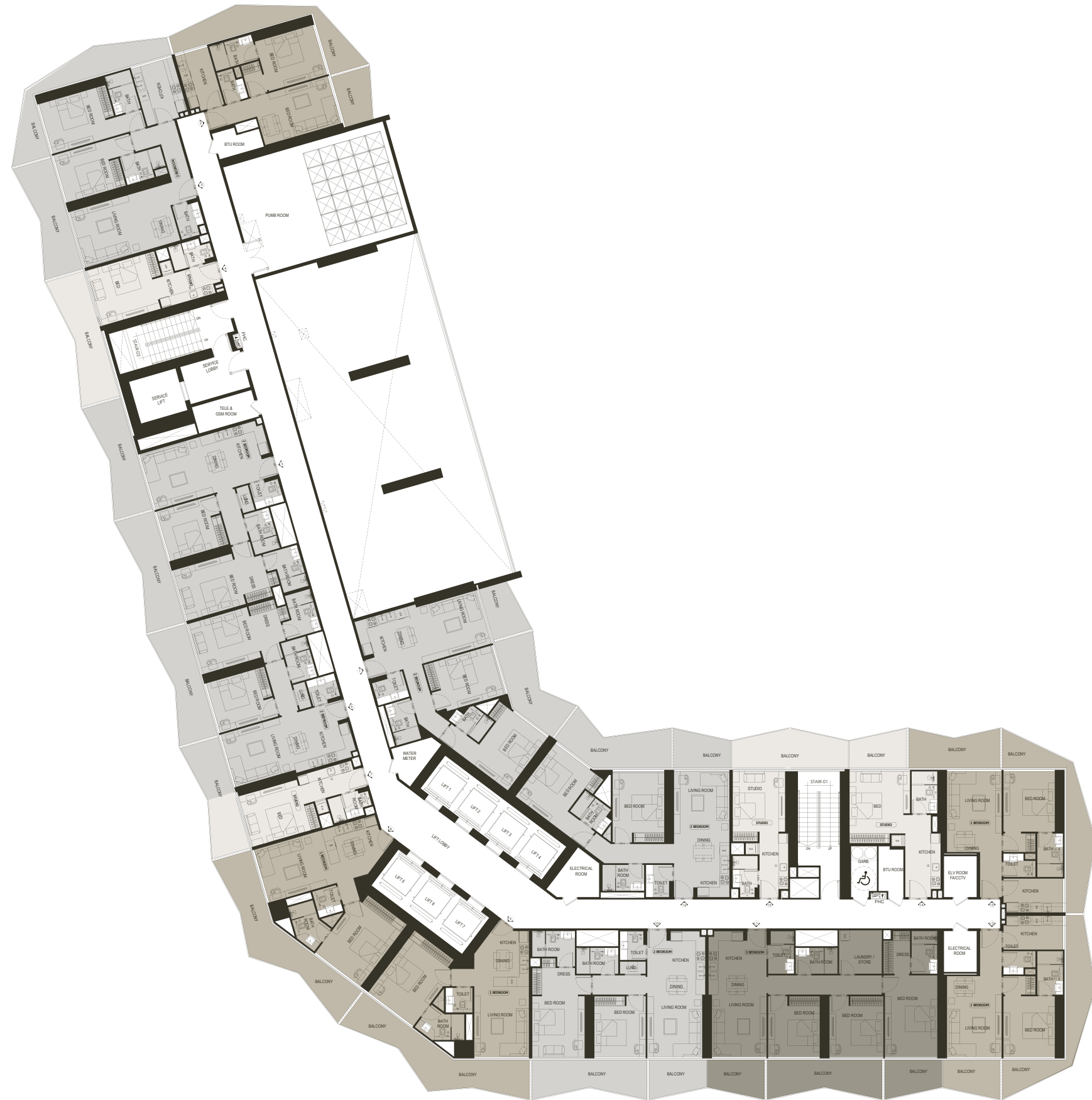
AVERAGE AREA WITHOUT BALCONY	585 - 658 ft <sup>2</sup>
AVERAGE AREA WITH BALCONY	774 - 975 ft <sup>2</sup>

## 2 BEDROOM

AVERAGE AREA WITHOUT BALCONY	903 - 988 ft²
AVERAGE AREA WITH BALCONY	1137 -1378 ft²

### 3 BEDROOM

AVERAGE AREA WITHOUT BALCONY	1218 ft²
AVERAGE AREA WITH BALCONY	1557 - 1609 ft²





## FLOOR PLAN

## TYPICAL FLOOR PLAN 3<sup>RD</sup> - 15<sup>TH</sup> FLOOR

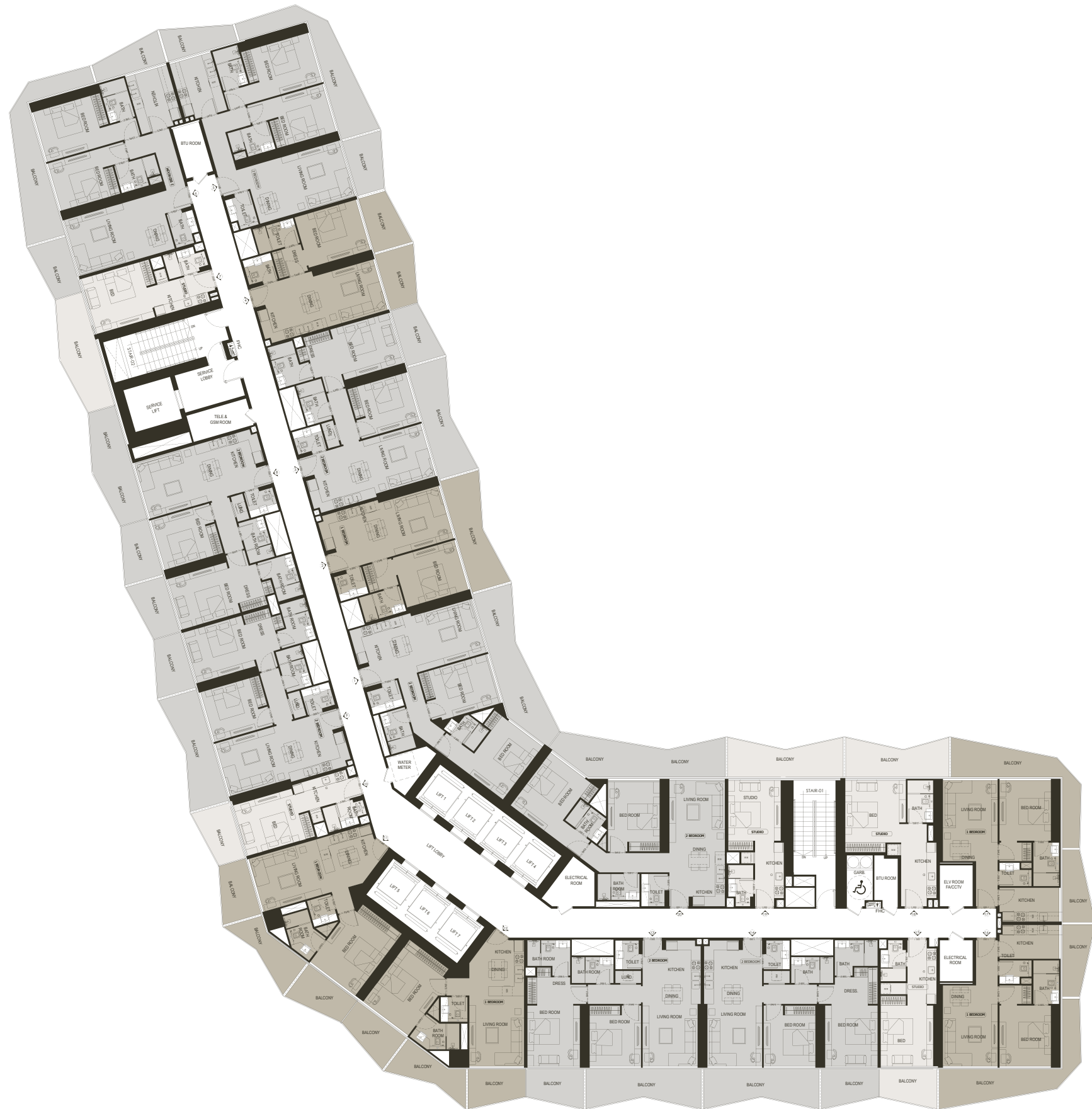
3 | 5 | 7 | 9 | 11 | 13 | 15

STUDIO	
AVERAGE AREA WITHOUT BALCONY	300 - 380 ft <sup>2</sup>
AVERAGE AREA WITH BALCONY	385 - 551 ft <sup>2</sup>

1 BEDROOM	
AVERAGE AREA WITHOUT BALCONY	585 - 658 ft <sup>2</sup>
AVERAGE AREA WITH BALCONY	774 - 975 ft <sup>2</sup>

2 BEDROOM	
AVERAGE AREA WITHOUT BALCONY	903 - 988 ft²
AVERAGE AREA WITH BALCONY	1137 -1378 ft²

3 BEDROOM	
AVERAGE AREA WITHOUT BALCONY	1218 ft <sup>2</sup>
AVERAGE AREA WITH BALCONY	1557 - 1609 ft <sup>2</sup>



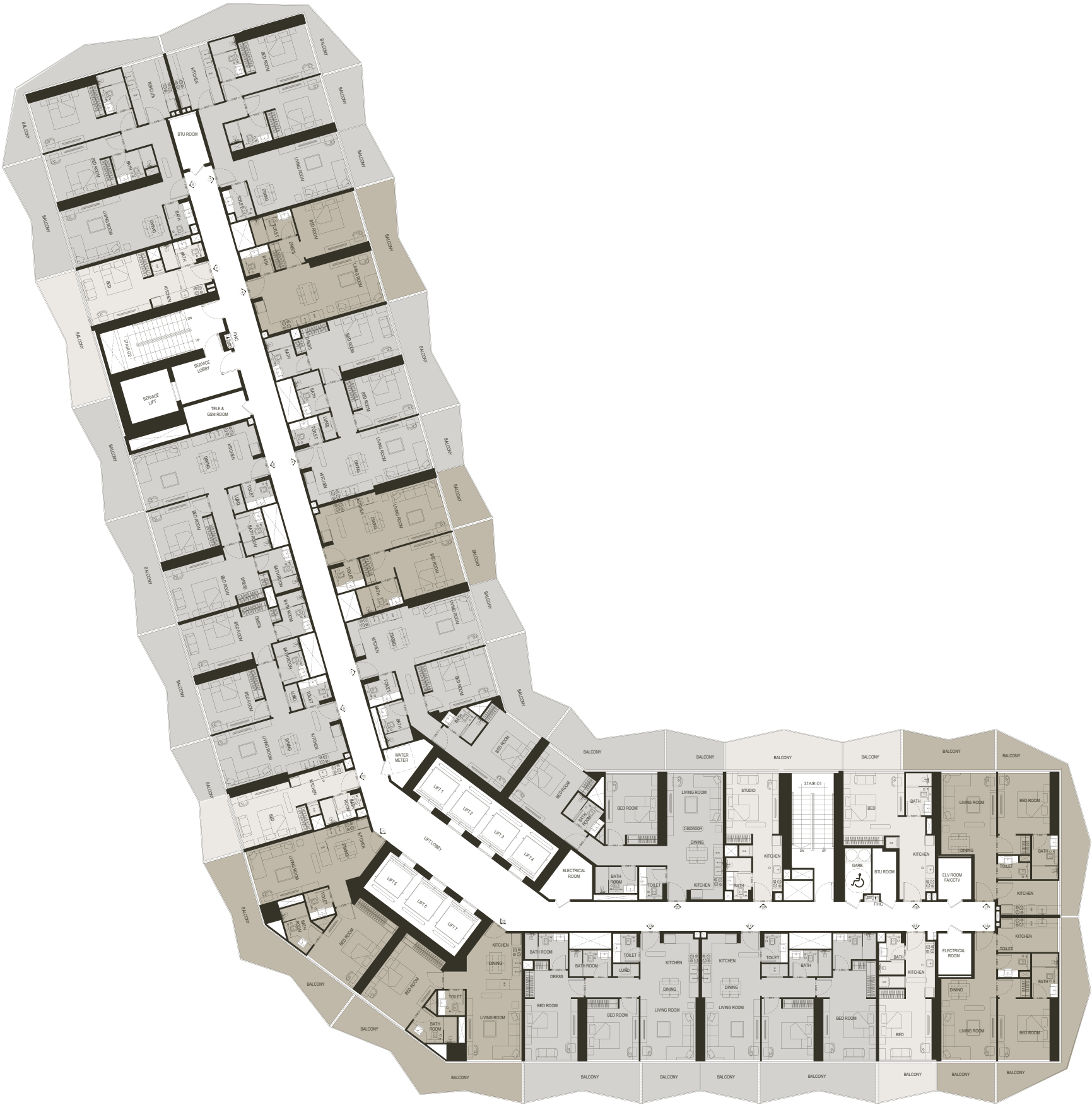


# TYPICAL FLOOR PLAN

## 4<sup>TH</sup> - 14<sup>TH</sup> FLOOR

4 | 6 | 8 | 10 |12 | 14

STUDIO	
AVERAGE AREA WITHOUT BALCONY	300 - 380 ft²
AVERAGE AREA WITH BALCONY	385 - 551 ft²
1 BEDROOM	
AVERAGE AREA WITHOUT BALCONY	585 - 658 ft²
AVERAGE AREA WITH BALCONY	774 - 975 ft²
2 BEDROOM	
AVERAGE AREA WITHOUT BALCONY	903 - 988 ft²
AVERAGE AREA WITH BALCONY	1137 -1378 ft²
3 BEDROOM	
AVERAGE AREA WITHOUT BALCONY	1218 ft²
AVERAGE AREA WITH BALCONY	1557 - 1609 ft²



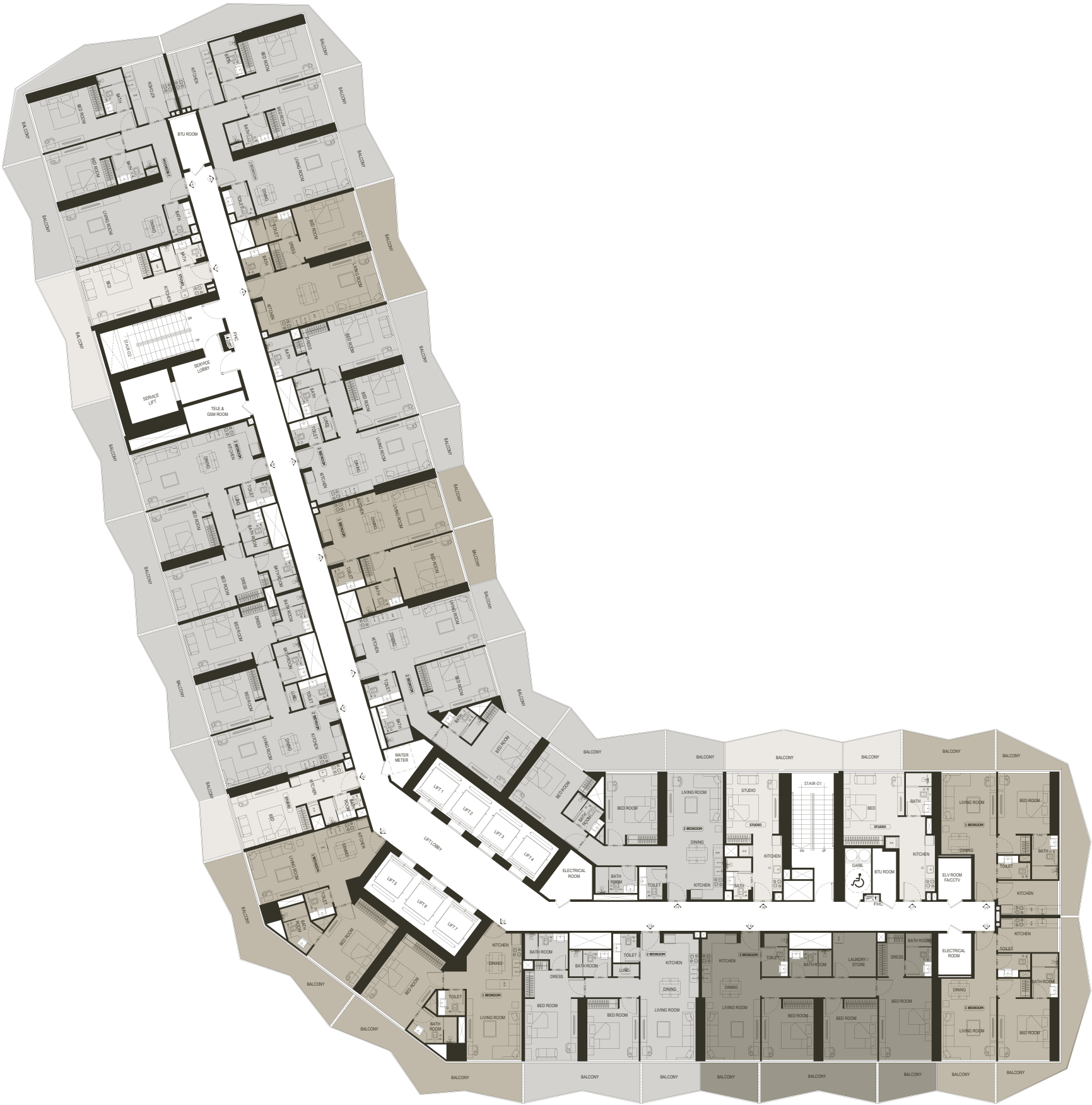


# TYPICAL FLOOR PLAN

## 16<sup>TH</sup> - 26<sup>TH</sup> FLOOR

16 | 18 | 20 | 22 | 24 | 26

STUDIO	
AVERAGE AREA WITHOUT BALCONY	300 - 380 ft²
AVERAGE AREA WITH BALCONY	385 - 551 ft²
1 BEDROOM	
AVERAGE AREA WITHOUT BALCONY	585 - 658 ft²
AVERAGE AREA WITH BALCONY	774 - 975 ft²
2 BEDROOM	
AVERAGE AREA WITHOUT BALCONY	903 - 988 ft²
AVERAGE AREA WITH BALCONY	1137 -1378 ft²
3 BEDROOM	
AVERAGE AREA WITHOUT BALCONY	1218 ft²
AVERAGE AREA WITH BALCONY	1557 - 1609 ft²



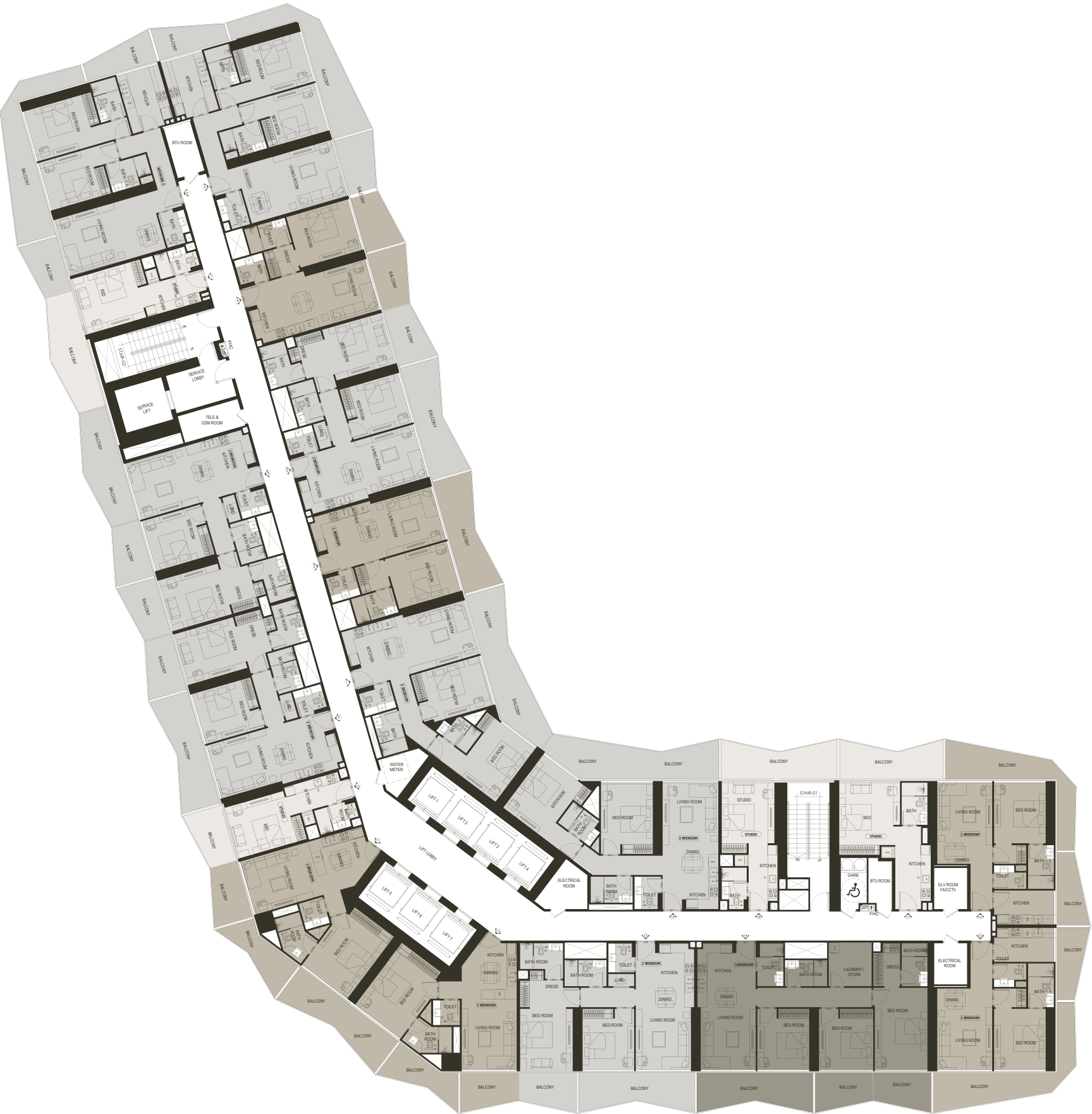


# TYPICAL FLOOR PLAN

## 17<sup>TH</sup> - 25<sup>TH</sup> FLOOR

17 | 19 | 21 | 23 | 25

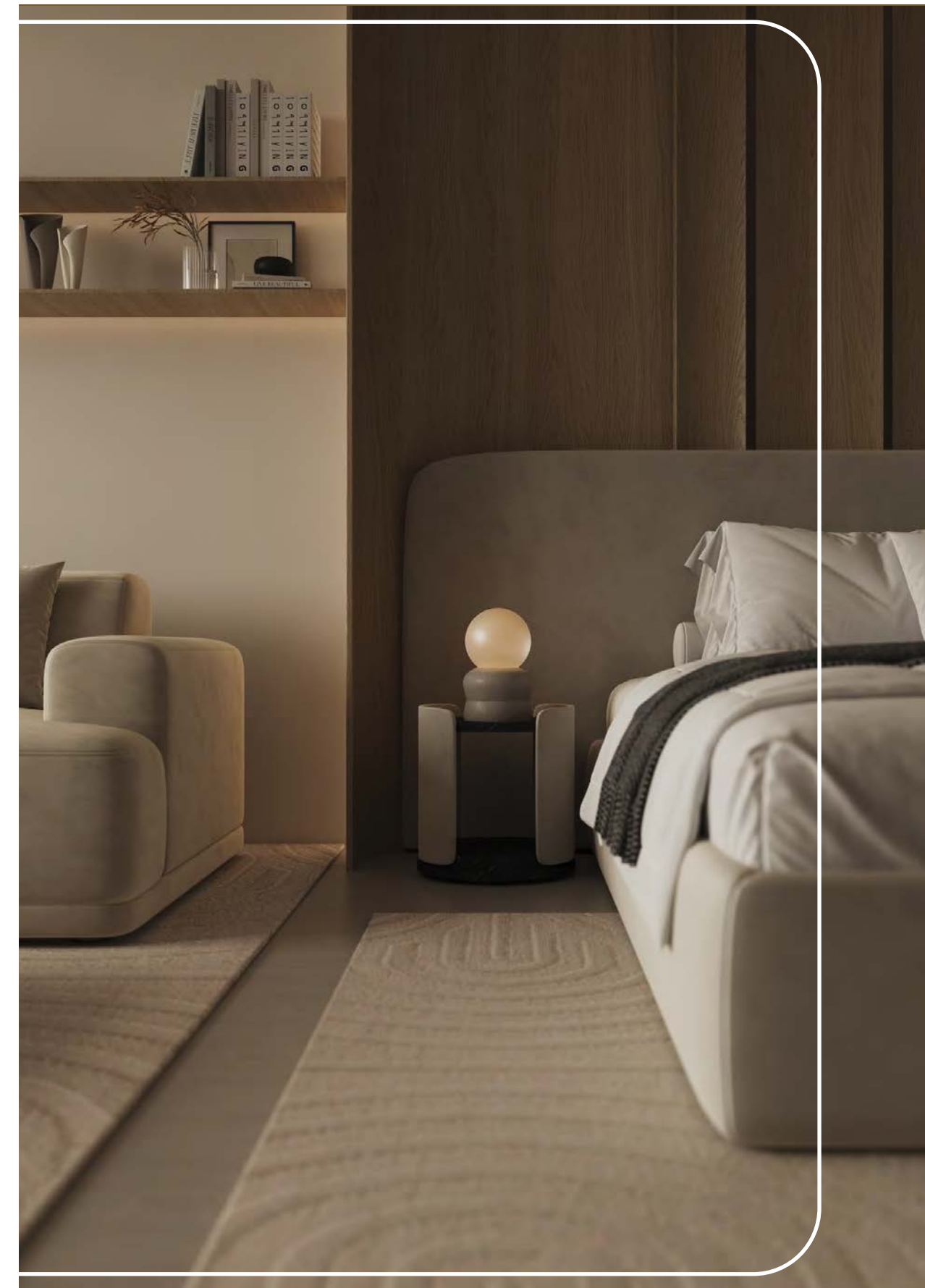
STUDIO	
AVERAGE AREA WITHOUT BALCONY	300 - 380 ft²
AVERAGE AREA WITH BALCONY	385 - 551 ft²
1 BEDROOM	
AVERAGE AREA WITHOUT BALCONY	585 - 658 ft²
AVERAGE AREA WITH BALCONY	774 - 975 ft²
2 BEDROOM	
AVERAGE AREA WITHOUT BALCONY	903 - 988 ft²
AVERAGE AREA WITH BALCONY	1137 -1378 ft²
3 BEDROOM	
AVERAGE AREA WITHOUT BALCONY	1218 ft²
AVERAGE AREA WITH BALCONY	1557 - 1609 ft²







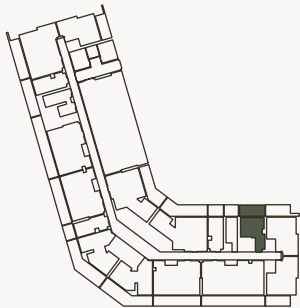






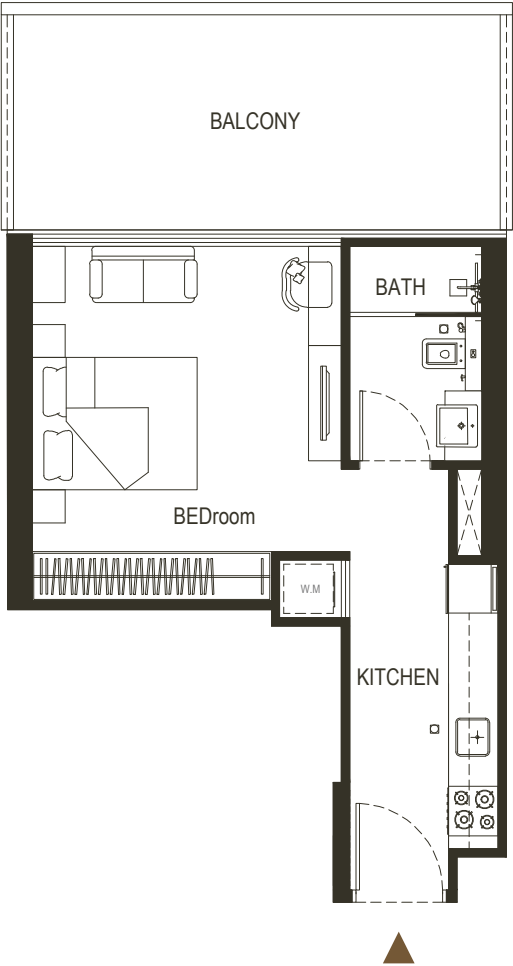
STUDIO

TYPE - 1



AREA	SQ.M	SQ.FT
SUITE AREA	35.35 m²	380 ft²
BALCONY AREA	26.21 m²	282.12 ft²
TOTAL UNIT AREA	61.56 m²	662.62 ft²

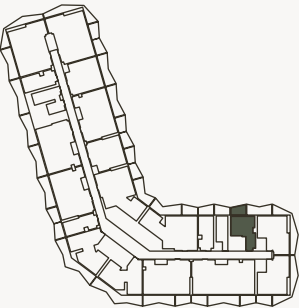
FLAT DESIGN COMPONENTS		
BATH	4 m²	
STUDIO	17 m²	
LAUNDRY	1 m²	
KITCHEN	7 m²	



Disclaimer: 1. All stated dimensions and services whether in relation to the building, common areas or individual units are subject to government and local authority approvals. Final dimensions and services will be stated in your sales and purchase agreement 2. All room dimensions are measured to structural elements and exclude wall finishes and construction tolerances. 3. All dimensions have been provided by our consultant architects. 4. All materials, dimensions and drawings are approximate. Information is subject to change without notice. 5. Actual suite area may vary from the stated area. Drawings are not to scale. The Developer reserves the right to make any revisions whatsoever including for aesthetic purposes.

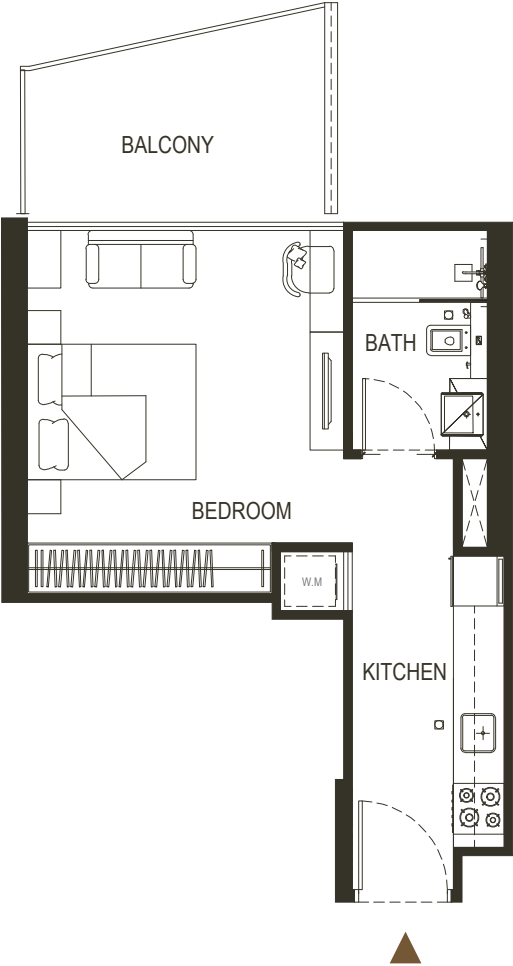
STUDIO

TYPE - 2



AREA	SQ.M	SQ.FT
SUITE AREA	35.18 m²	378.67 ft²
BALCONY AREA	16.03 m²	172.55 ft²
TOTAL UNIT AREA	51.21 m²	551.21 ft²

FLAT DESIGN COMPONENTS		
BATH	4 m²	
STUDIO	17 m²	
LAUNDRY	1 m²	
KITCHEN	7 m²	

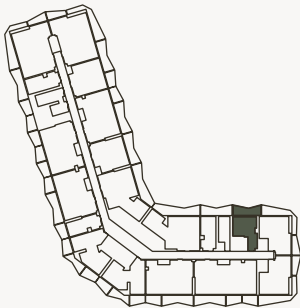


6. Calculation of suite area is measured as the area bounded by the centre line of demising or partition walls separating one unit from another unit, the exterior face of all exterior walls, and the exterior face of the corridor wall enclosing the adjoining unit. 7. Calculation of balcony area is measured as the area bounded by the centre line of demising or partition walls separating one unit from another unit, the outmost face of the enclosing guard and the external face of the adjoining balcony. 8. The units are measured at typical floor in the building. Columns may vary in size depending on the floor level. 9. For each unit type, unit sizes and details might be different and your sales and purchase agreement will contain the actual size of each specific unit.



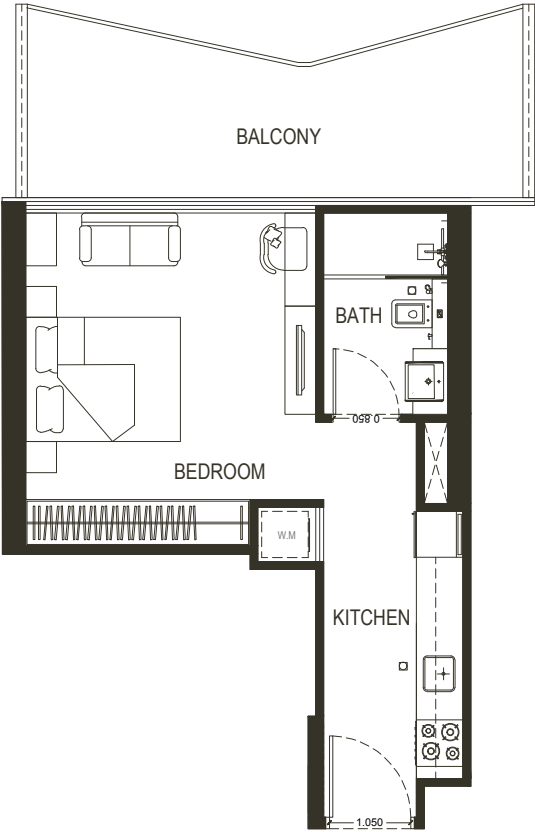
STUDIO

TYPE - 3



AREA	SQ.M	SQ.FT
SUITE AREA	35.24 m²	379.32 ft²
BALCONY AREA	14.47 m²	155.75 ft²
TOTAL UNIT AREA	49.71 m²	535.07 ft²

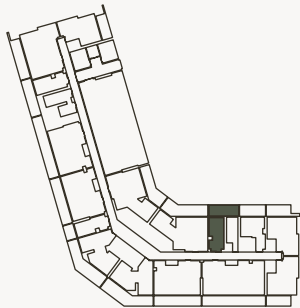
FLAT DESIGN COMPONENTS		
BATH	4 m²	
STUDIO	17 m²	
LAUNDRY	1 m²	
KITCHEN	7 m²	



Disclaimer: 1. All stated dimensions and services whether in relation to the building, common areas or individual units are subject to government and local authority approvals. Final dimensions and services will be stated in your sales and purchase agreement 2. All room dimensions are measured to structural elements and exclude wall finishes and construction tolerances. 3. All dimensions have been provided by our consultant architects. 4. All materials, dimensions and drawings are approximate. Information is subject to change without notice. 5. Actual suite area may vary from the stated area. Drawings are not to scale. The Developer reserves the right to make any revisions whatsoever including for aesthetic purposes.

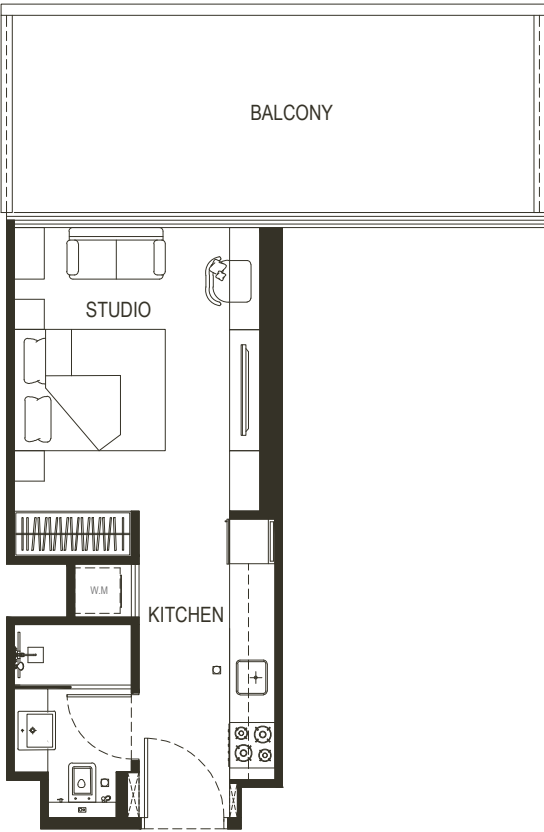
STUDIO

TYPE - 4



AREA	SQ.M	SQ.FT
SUITE AREA	29.05 m²	312.69 ft²
BALCONY AREA	10.07 m²	108.39 ft²
TOTAL UNIT AREA	39.12 m²	421.08 ft²

FLAT DESIGN COMPONENTS		
BATH	4 m²	
STUDIO	13 m²	
LAUNDRY	1 m²	
KITCHEN	7 m²	

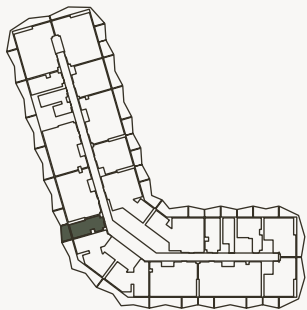


6. Calculation of suite area is measured as the area bounded by the centre line of demising or partition walls separating one unit from another unit, the exterior face of all exterior walls, and the exterior face of the corridor wall enclosing the adjoining unit. 7. Calculation of balcony area is measured as the area bounded by the centre line of demising or partition walls separating one unit from another unit, the outmost face of the enclosing guard and the external face of the adjoining balcony. 8. The units are measured at typical floor in the building. Columns may vary in size depending on the floor level. 9. For each unit type, unit sizes and details might be different and your sales and purchase agreement will contain the actual size of each specific unit.



STUDIO

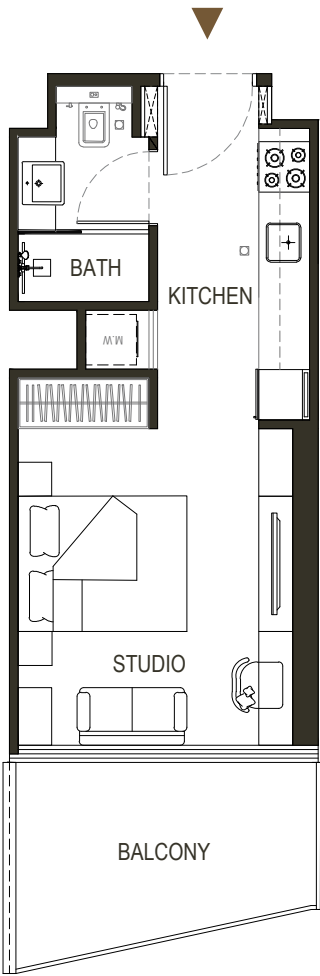
TYPE - 5



AREA	SQ.M	SQ.FT
SUITE AREA	27.91 m²	300.42 ft²
BALCONY AREA	7.93 m²	85.36 ft²
TOTAL UNIT AREA	35.84 m²	385.78 ft²

FLAT DESIGN COMPONENTS		
BATH	4 m²	
STUDIO	13 m²	
LAUNDRY	1 m²	
KITCHEN	7 m²	

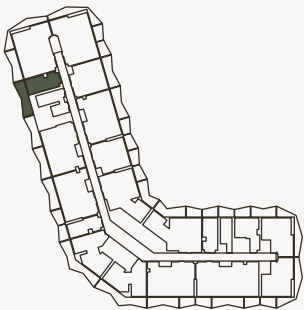
Disclaimer: 1. All stated dimensions and services whether in relation to the building, common areas or individual units are subject to government and local authority approvals. Final dimensions and services will be stated in your sales and purchase agreement 2. All room dimensions are measured to structural elements and exclude wall finishes and construction tolerances. 3. All dimensions have been provided by our consultant architects. 4. All materials, dimensions and drawings are approximate. Information is subject to change without notice. 5. Actual suite area may vary from the stated area. Drawings are not to scale. The Developer reserves the right to make any revisions whatsoever including for aesthetic purposes.



6. Calculation of suite area is measured as the area bounded by the centre line of demising or partition walls separating one unit from another unit, the exterior face of all exterior walls, and the exterior face of the corridor wall enclosing the adjoining unit. 7. Calculation of balcony area is measured as the area bounded by the centre line of demising or partition walls separating one unit from another unit, the outmost face of the enclosing guard and the external face of the adjoining balcony. 8. The units are measured at typical floor in the building. Columns may vary in size depending on the floor level. 9. For each unit type, unit sizes and details might be different and your sales and purchase agreement will contain the actual size of each specific unit.

STUDIO

TYPE - 6



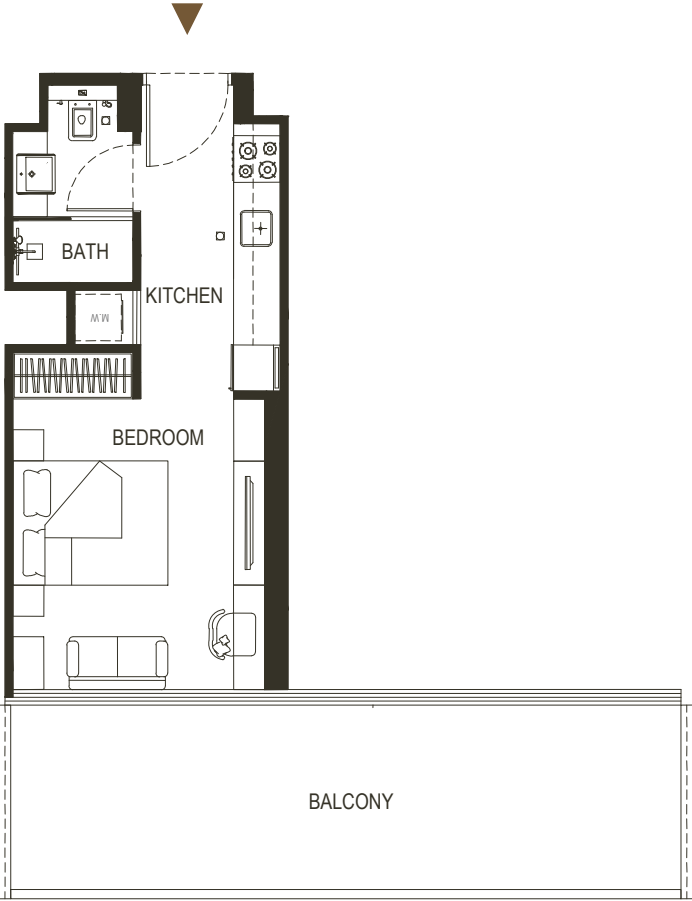
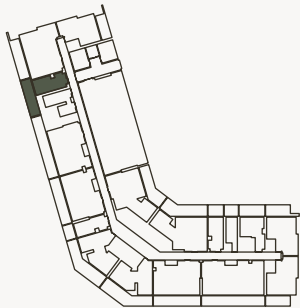
AREA	SQ.M	SQ.FT
SUITE AREA	30.21 m²	325.17 ft²
BALCONY AREA	19.01 m²	204.62 ft²
TOTAL UNIT AREA	49.22 m²	529.79 ft²

FLAT DESIGN COMPONENTS		
BATH	4 m²	
STUDIO	13 m²	
LAUNDRY	1 m²	
KITCHEN	7 m²	



STUDIO

TYPE - 7



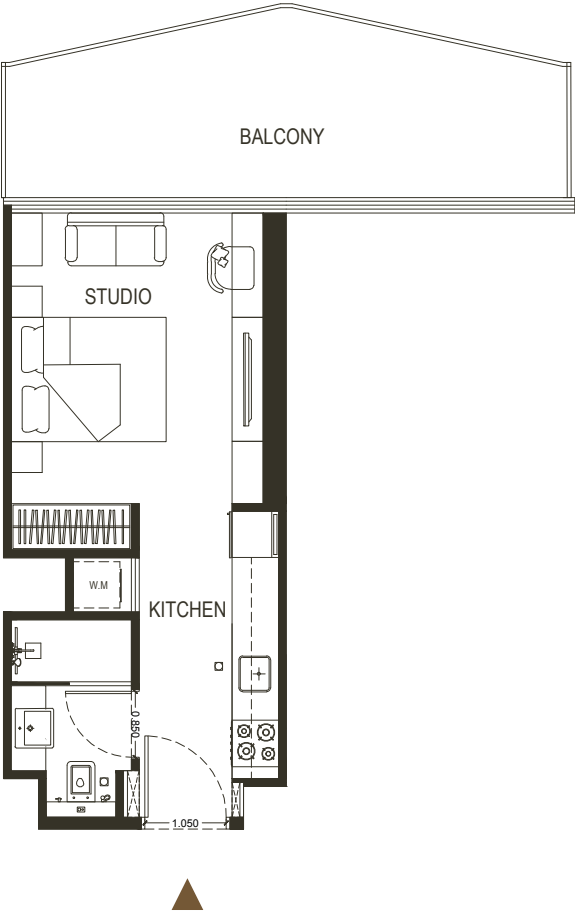
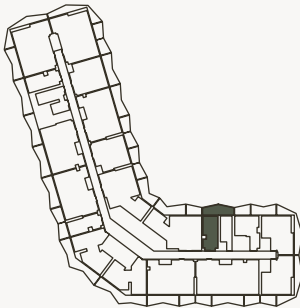
AREA	SQ.M	SQ.FT
SUITE AREA	30.21 m <sup>2</sup>	325.17 ft <sup>2</sup>
BALCONY AREA	18.12 m <sup>2</sup>	195.04 ft <sup>2</sup>
TOTAL UNIT AREA	48.33 m <sup>2</sup>	520.21 ft <sup>2</sup>

FLAT DESIGN COMPONENTS		
BATH	4 m <sup>2</sup>	
STUDIO	13 m <sup>2</sup>	
LAUNDRY	1 m <sup>2</sup>	
KITCHEN	7 m <sup>2</sup>	

Disclaimer: 1. All stated dimensions and services whether in relation to the building, common areas or individual units are subject to government and local authority approvals. Final dimensions and services will be stated in your sales and purchase agreement 2. All room dimensions are measured to structural elements and exclude wall finishes and construction tolerances. 3. All dimensions have been provided by our consultant architects. 4. All materials, dimensions and drawings are approximate. Information is subject to change without notice. 5. Actual suite area may vary from the stated area. Drawings are not to scale. The Developer reserves the right to make any revisions whatsoever including for aesthetic purposes.

STUDIO

TYPE - 8



AREA	SQ.M	SQ.FT
SUITE AREA	28.92 m <sup>2</sup>	311.29 ft <sup>2</sup>
BALCONY AREA	8.02 m <sup>2</sup>	86.32 ft <sup>2</sup>
TOTAL UNIT AREA	36.94m <sup>2</sup>	397.61 ft <sup>2</sup>

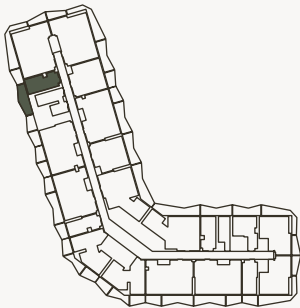
FLAT DESIGN COMPONENTS		
BATH	4 m <sup>2</sup>	
STUDIO	13 m <sup>2</sup>	
LAUNDRY	1 m <sup>2</sup>	
KITCHEN	7 m <sup>2</sup>	

6. Calculation of suite area is measured as the area bounded by the centre line of demising or partition walls separating one unit from another unit, the exterior face of all exterior walls, and the exterior face of the corridor wall enclosing the adjoining unit. 7. Calculation of balcony area is measured as the area bounded by the centre line of demising or partition walls separating one unit from another unit, the outmost face of the enclosing guard and the external face of the adjoining balcony. 8. The units are measured at typical floor in the building. Columns may vary in size depending on the floor level. 9. For each unit type, unit sizes and details might be different and your sales and purchase agreement will contain the actual size of each specific unit.



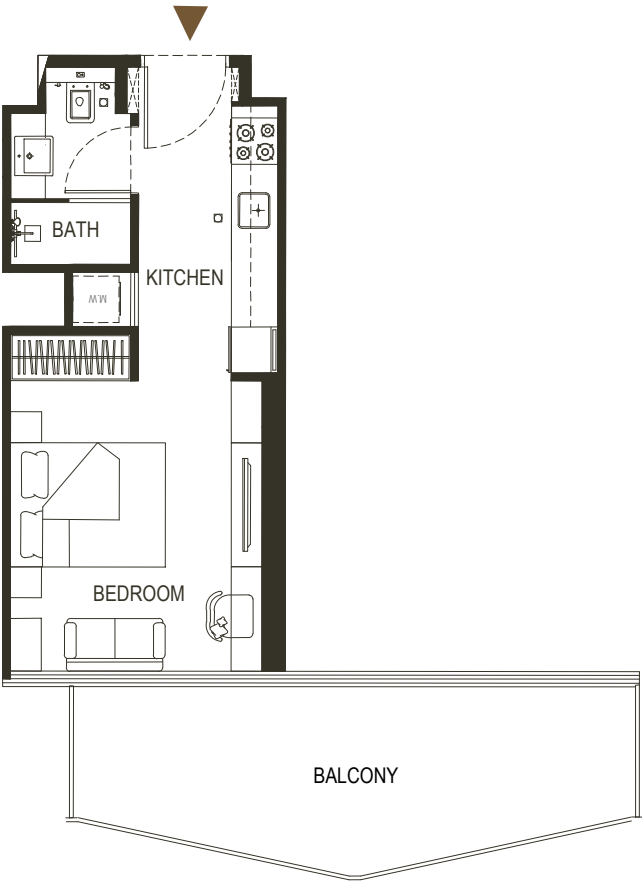
STUDIO

TYPE - 9



AREA	SQ.M	SQ.FT
SUITE AREA	30.21 m²	325.17 ft²
BALCONY AREA	18.64 m²	200.63 ft²
TOTAL UNIT AREA	48.85 m²	525.81 ft²

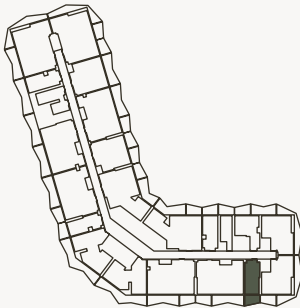
FLAT DESIGN COMPONENTS		
BATH	4 m²	
STUDIO	13 m²	
LAUNDRY	1 m²	
KITCHEN	7 m²	



Disclaimer: 1. All stated dimensions and services whether in relation to the building, common areas or individual units are subject to government and local authority approvals. Final dimensions and services will be stated in your sales and purchase agreement 2. All room dimensions are measured to structural elements and exclude wall finishes and construction tolerances. 3. All dimensions have been provided by our consultant architects. 4. All materials, dimensions and drawings are approximate. Information is subject to change without notice. 5. Actual suite area may vary from the stated area. Drawings are not to scale. The Developer reserves the right to make any revisions whatsoever including for aesthetic purposes.

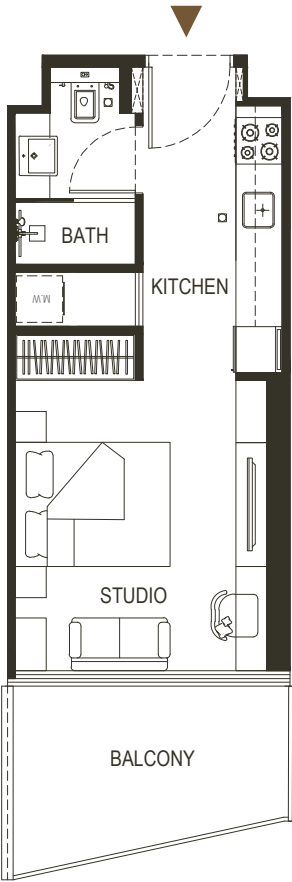
STUDIO

TYPE - 10



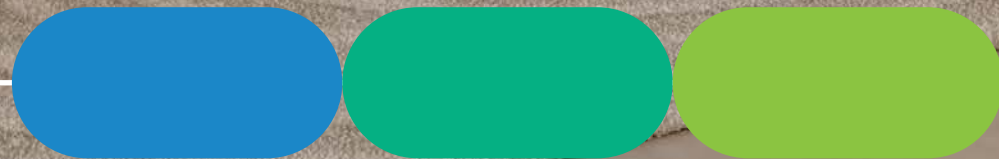
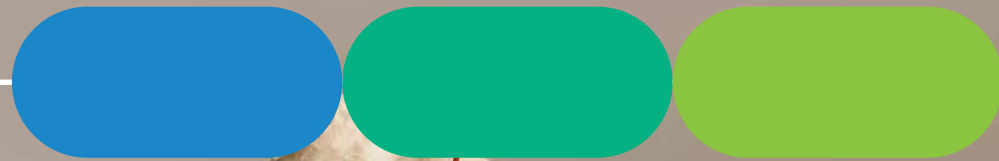
AREA	SQ.M	SQ.FT
SUITE AREA	28.82 m²	310.21 ft²
BALCONY AREA	7.93 m²	85.35 ft²
TOTAL UNIT AREA	36.75 m²	395.57 ft²

FLAT DESIGN COMPONENTS		
BATH	4 m²	
STUDIO	13 m²	
LAUNDRY	1 m²	
KITCHEN	7 m²	



6. Calculation of suite area is measured as the area bounded by the centre line of demising or partition walls separating one unit from another unit, the exterior face of all exterior walls, and the exterior face of the corridor wall enclosing the adjoining unit. 7. Calculation of balcony area is measured as the area bounded by the centre line of demising or partition walls separating one unit from another unit, the outmost face of the enclosing guard and the external face of the adjoining balcony. 8. The units are measured at typical floor in the building. Columns may vary in size depending on the floor level. 9. For each unit type, unit sizes and details might be different and your sales and purchase agreement will contain the actual size of each specific unit.

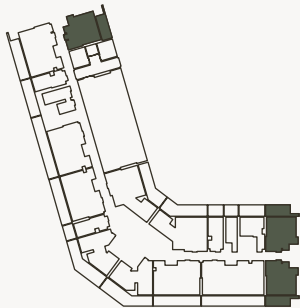






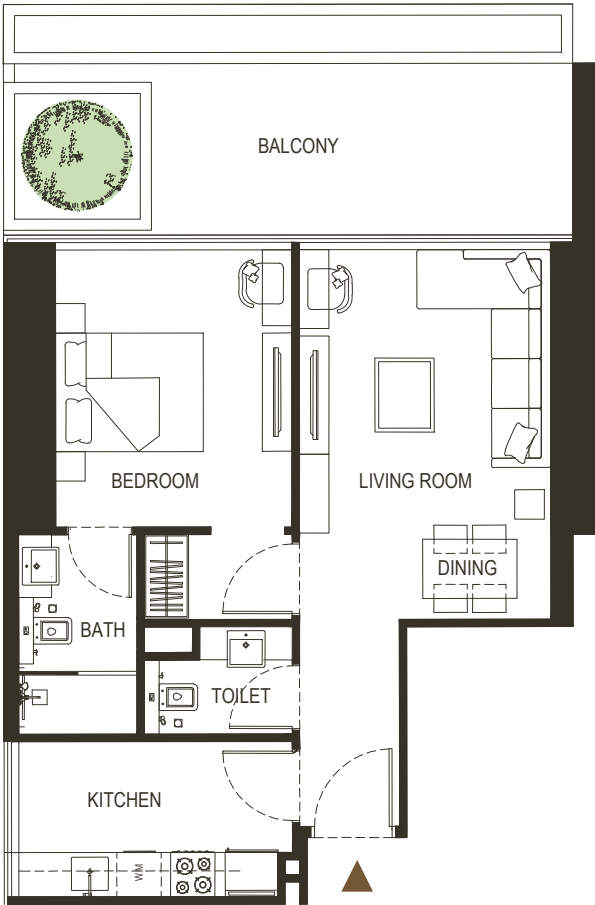
1 BEDROOM

TYPE - 1



AREA	SQ.M	SQ.FT
SUITE AREA	56.86 m <sup>2</sup>	612.03 ft <sup>2</sup>
BALCONY AREA	21.30 m <sup>2</sup>	229.27 ft <sup>2</sup>
TOTAL UNIT AREA	78.16 m <sup>2</sup>	841.30 ft <sup>2</sup>

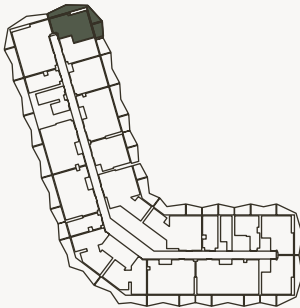
FLAT DESIGN COMPONENTS		
MASTER BATH	5 m <sup>2</sup>	
MASTER BEDROOM	15 m <sup>2</sup>	
LIVING	17 m <sup>2</sup>	
KITCHEN & DINING	8 m <sup>2</sup>	
W.C	3 m <sup>2</sup>	
CORRIDOR	4 m <sup>2</sup>	



Disclaimer: 1. All stated dimensions and services whether in relation to the building, common areas or individual units are subject to government and local authority approvals. Final dimensions and services will be stated in your sales and purchase agreement 2. All room dimensions are measured to structural elements and exclude wall finishes and construction tolerances. 3. All dimensions have been provided by our consultant architects. 4. All materials, dimensions and drawings are approximate. Information is subject to change without notice. 5. Actual suite area may vary from the stated area. Drawings are not to scale. The Developer reserves the right to make any revisions whatsoever including for aesthetic purposes.

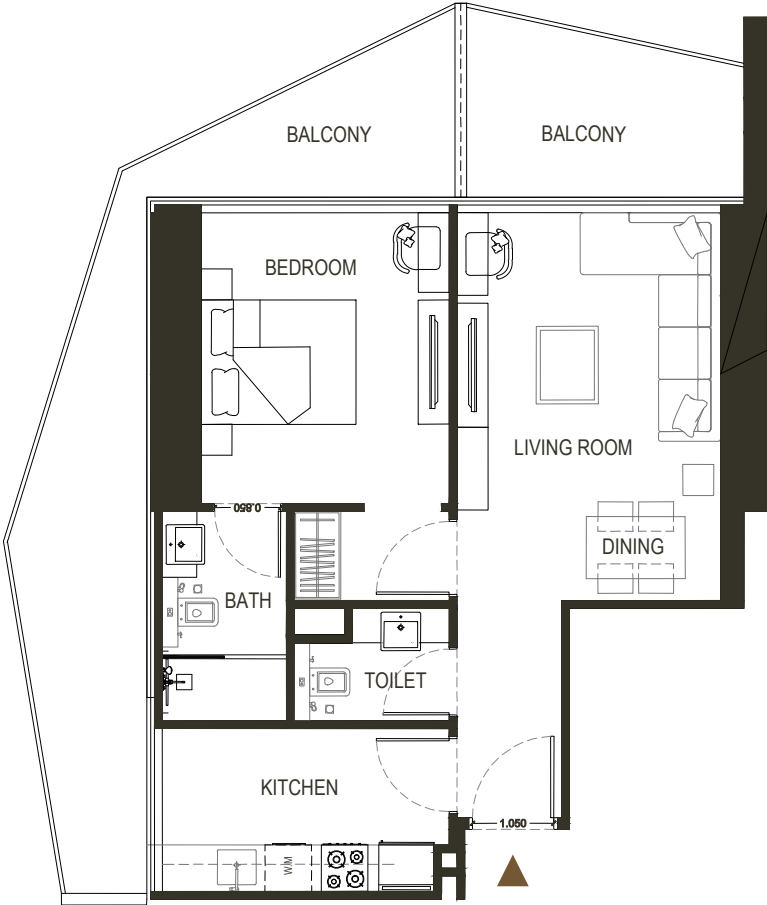
1 BEDROOM

TYPE - 2



AREA	SQ.M	SQ.FT
SUITE AREA	54.43 m <sup>2</sup>	585.87 ft <sup>2</sup>
BALCONY AREA	27.65 m <sup>2</sup>	297.62 ft <sup>2</sup>
TOTAL UNIT AREA	82.08 m <sup>2</sup>	883.50 ft <sup>2</sup>

FLAT DESIGN COMPONENTS		
MASTER BATH	4 m <sup>2</sup>	
MASTER BEDROOM	15 m <sup>2</sup>	
LIVING	17 m <sup>2</sup>	
KITCHEN & DINING	8 m <sup>2</sup>	
W.C	3 m <sup>2</sup>	
CORRIDOR	4 m <sup>2</sup>	

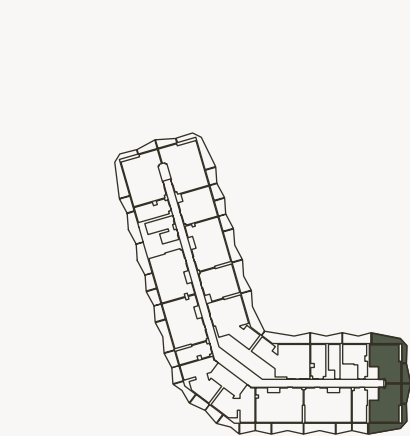


6. Calculation of suite area is measured as the area bounded by the centre line of demising or partition walls separating one unit from another unit, the exterior face of all exterior walls, and the exterior face of the corridor wall enclosing the adjoining unit. 7. Calculation of balcony area is measured as the area bounded by the centre line of demising or partition walls separating one unit from another unit, the outmost face of the enclosing guard and the external face of the adjoining balcony. 8. The units are measured at typical floor in the building. Columns may vary in size depending on the floor level. 9. For each unit type, unit sizes and details might be different and your sales and purchase agreement will contain the actual size of each specific unit.



1 BEDROOM

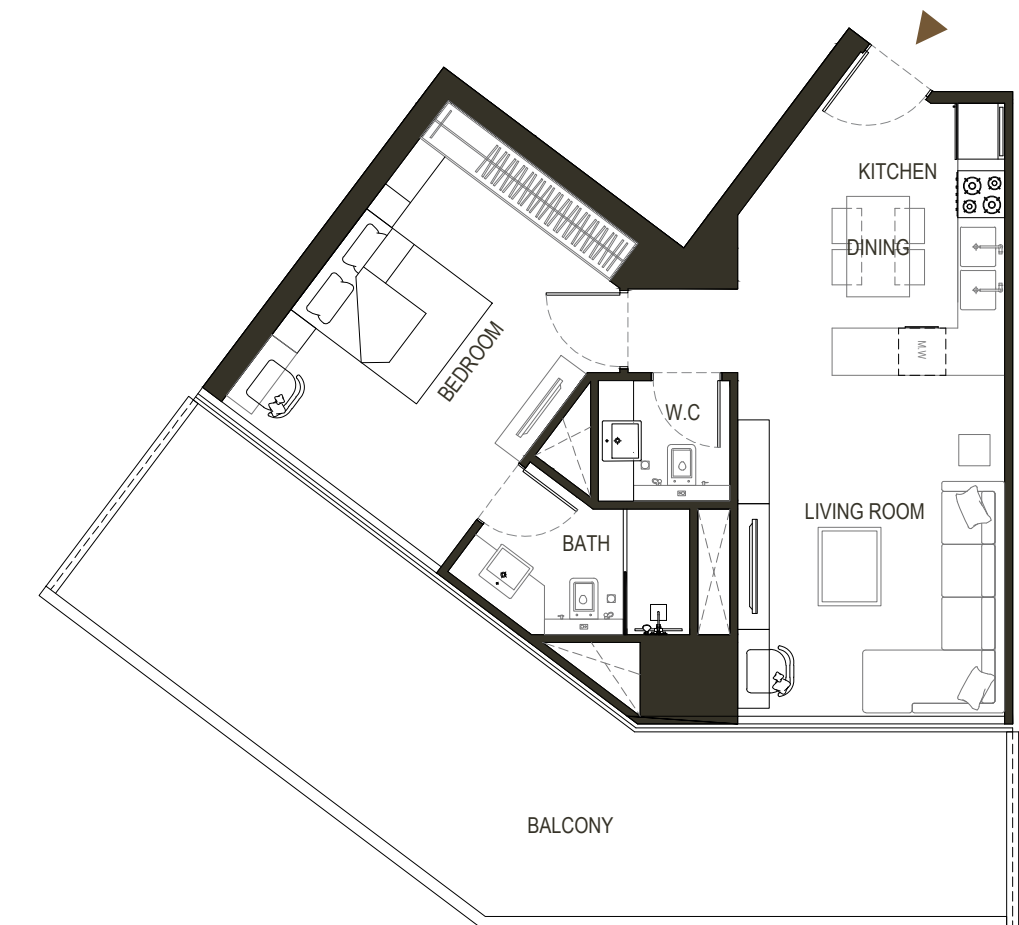
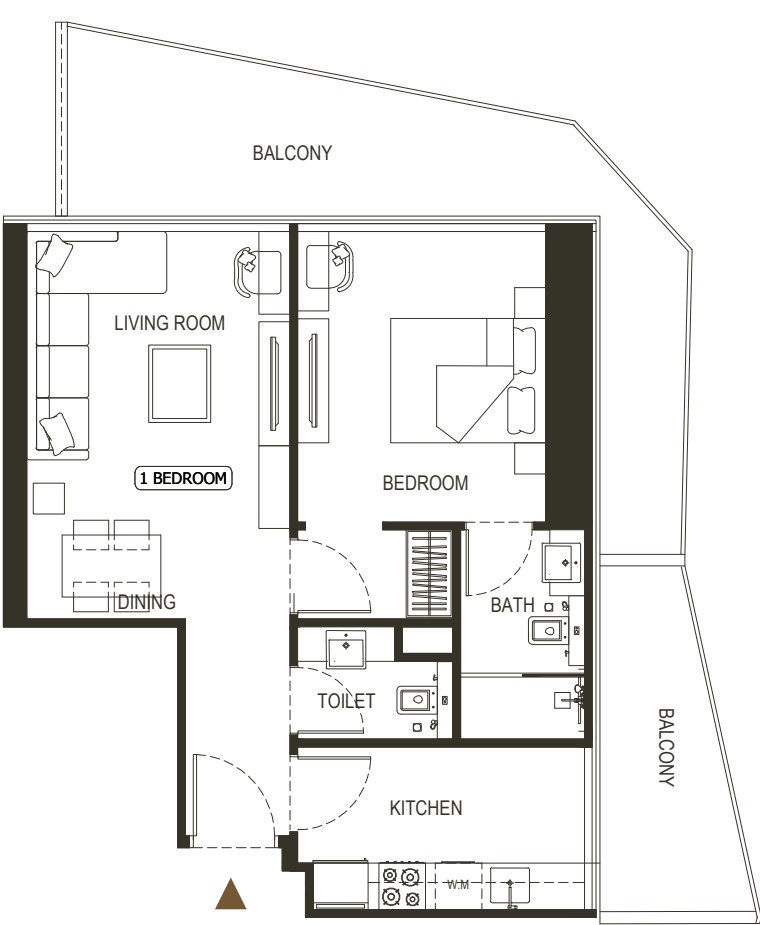
TYPE - 3



AREA	SQ.M	SQ.FT
SUITE AREA	56.87 m²	612.14 ft²
BALCONY AREA	28.85 m²	310.53 ft²
TOTAL UNIT AREA	85.72 m²	922.68 ft²

FLAT DESIGN COMPONENTS		
MASTER BATH	4 m²	
MASTER BEDROOM	15 m²	
LIVING	15 m²	
KITCHEN & DINING	8 m²	
W.C	3 m²	
CORRIDOR	4 m²	

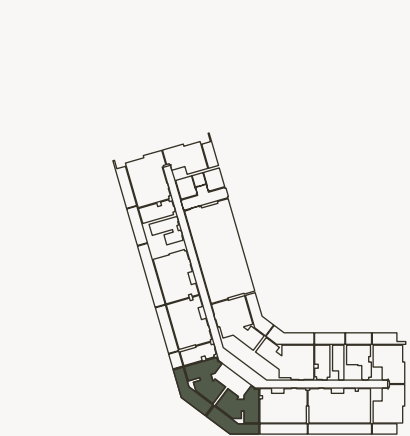
Disclaimer: 1. All stated dimensions and services whether in relation to the building, common areas or individual units are subject to government and local authority approvals. Final dimensions and services will be stated in your sales and purchase agreement 2. All room dimensions are measured to structural elements and exclude wall finishes and construction tolerances. 3. All dimensions have been provided by our consultant architects. 4. All materials, dimensions and drawings are approximate. Information is subject to change without notice. 5. Actual suite area may vary from the stated area. Drawings are not to scale. The Developer reserves the right to make any revisions whatsoever including for aesthetic purposes.



6. Calculation of suite area is measured as the area bounded by the centre line of demising or partition walls separating one unit from another unit, the exterior face of all exterior walls, and the exterior face of the corridor wall enclosing the adjoining unit. 7. Calculation of balcony area is measured as the area bounded by the centre line of demising or partition walls separating one unit from another unit, the outmost face of the enclosing guard and the external face of the adjoining balcony. 8. The units are measured at typical floor in the building. Columns may vary in size depending on the floor level. 9. For each unit type, unit sizes and details might be different and your sales and purchase agreement will contain the actual size of each specific unit.

1 BEDROOM

TYPE - 4



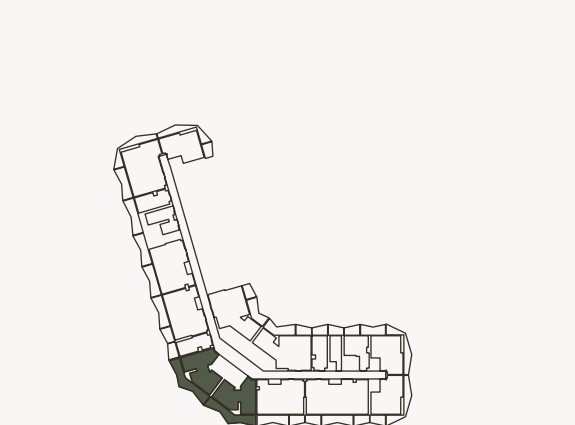
AREA	SQ.M	SQ.FT
SUITE AREA	61.22 m²	658.96 ft²
BALCONY AREA	36.70 m²	395.03 ft²
TOTAL UNIT AREA	97.92 m²	1054 ft²

FLAT DESIGN COMPONENTS		
MASTER BATH	5 m²	
MASTER BEDROOM	17 m²	
LIVING	15 m²	
KITCHEN & DINING	11 m²	
W.C	3 m²	
CORRIDOR	2 m²	



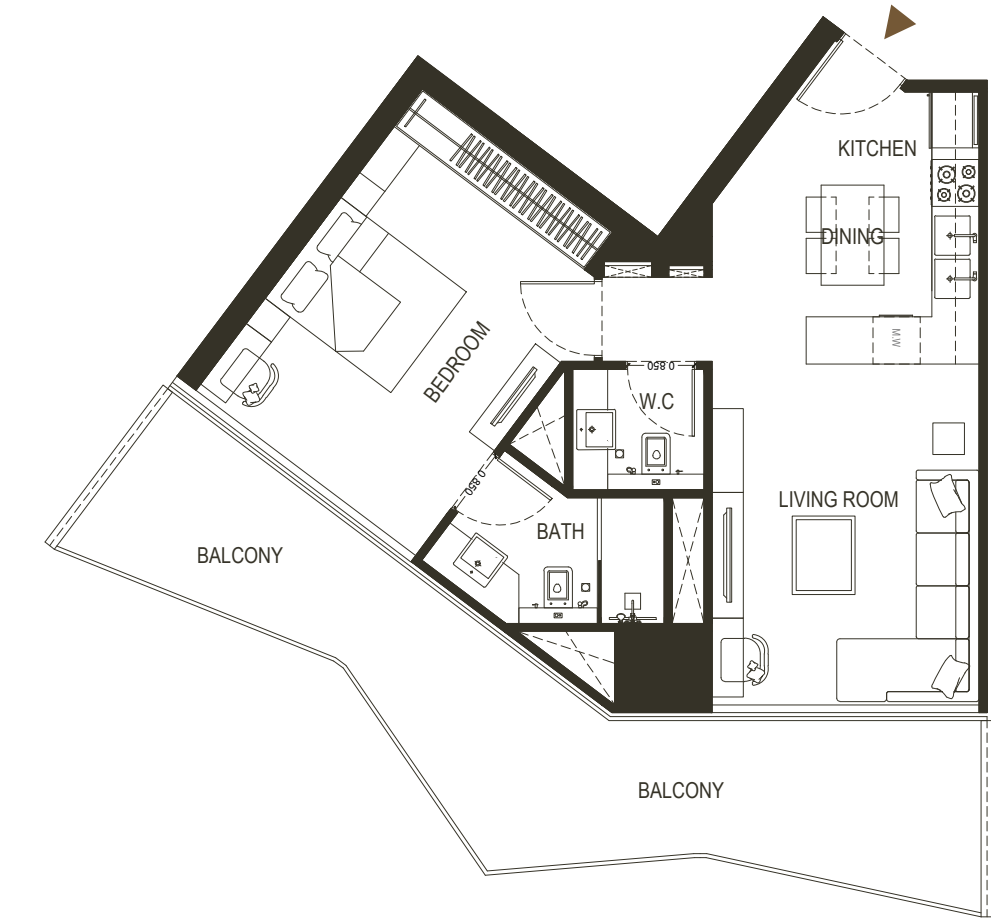
1 BEDROOM

TYPE - 5



AREA	SQ.M	SQ.FT
SUITE AREA	61.22 m²	658.96 ft²
BALCONY AREA	25.95 m²	279.32 ft²
TOTAL UNIT AREA	87.17 m²	938.29 ft²

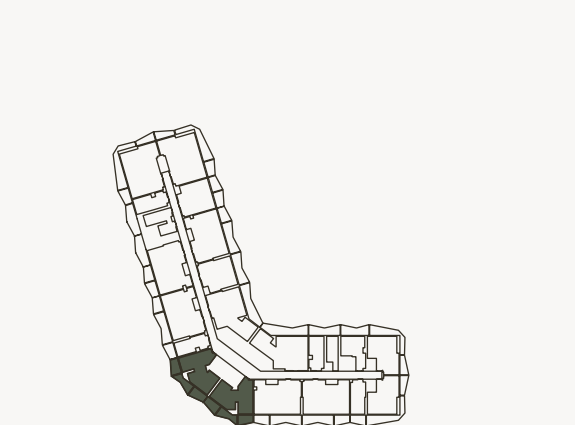
FLAT DESIGN COMPONENTS		
MASTER BATH	5 m²	
MASTER BEDROOM	17 m²	
LIVING	15 m²	
KITCHEN & DINING	11 m²	
W.C	3 m²	
CORRIDOR	2 m²	



Disclaimer: 1. All stated dimensions and services whether in relation to the building, common areas or individual units are subject to government and local authority approvals. Final dimensions and services will be stated in your sales and purchase agreement 2. All room dimensions are measured to structural elements and exclude wall finishes and construction tolerances. 3. All dimensions have been provided by our consultant architects. 4. All materials, dimensions and drawings are approximate. Information is subject to change without notice. 5. Actual suite area may vary from the stated area. Drawings are not to scale. The Developer reserves the right to make any revisions whatsoever including for aesthetic purposes.

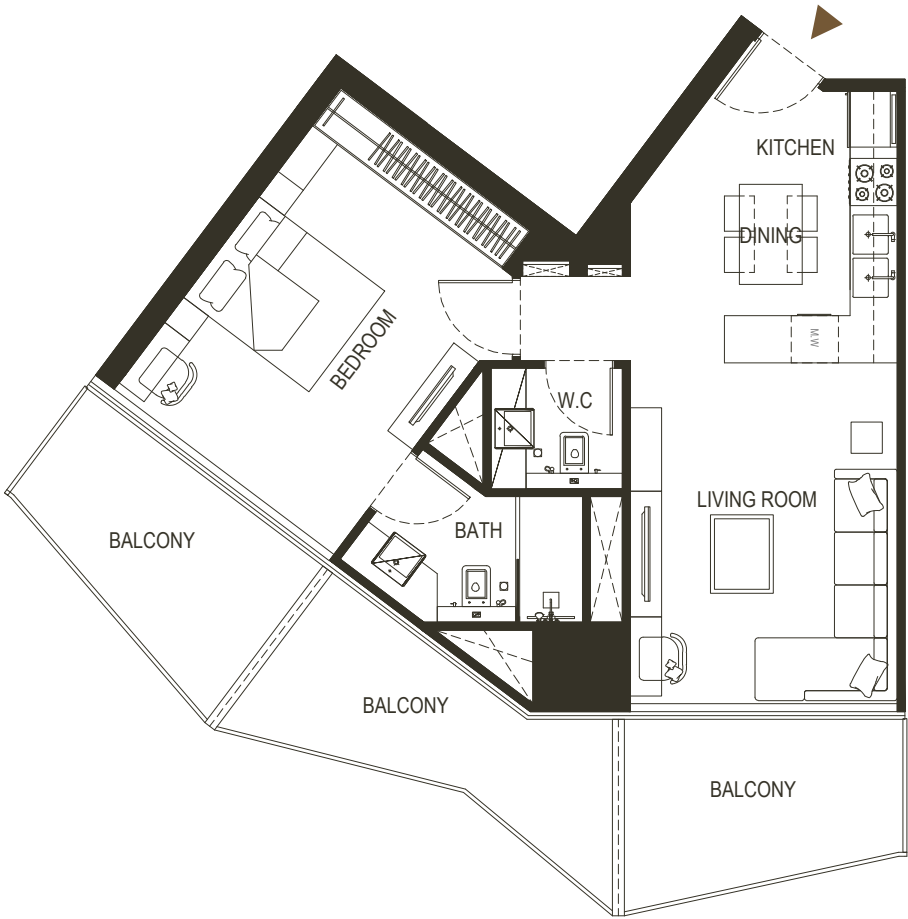
1 BEDROOM

TYPE - 6



AREA	SQ.M	SQ.FT
SUITE AREA	61.18 m²	658.53 ft²
BALCONY AREA	25.46 m²	274.04 ft²
TOTAL UNIT AREA	86.64 m²	932.58 ft²

FLAT DESIGN COMPONENTS		
MASTER BATH	5 m²	
MASTER BEDROOM	17 m²	
LIVING	15 m²	
KITCHEN & DINING	11 m²	
W.C	3 m²	
CORRIDOR	2 m²	

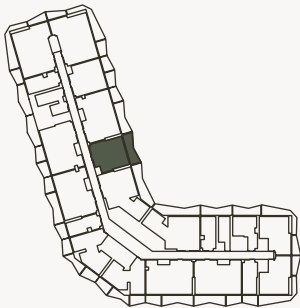


6. Calculation of suite area is measured as the area bounded by the centre line of demising or partition walls separating one unit from another unit, the exterior face of all exterior walls, and the exterior face of the corridor wall enclosing the adjoining unit. 7. Calculation of balcony area is measured as the area bounded by the centre line of demising or partition walls separating one unit from another unit, the outmost face of the enclosing guard and the external face of the adjoining balcony. 8. The units are measured at typical floor in the building. Columns may vary in size depending on the floor level. 9. For each unit type, unit sizes and details might be different and your sales and purchase agreement will contain the actual size of each specific unit.



1 BEDROOM

TYPE - 7

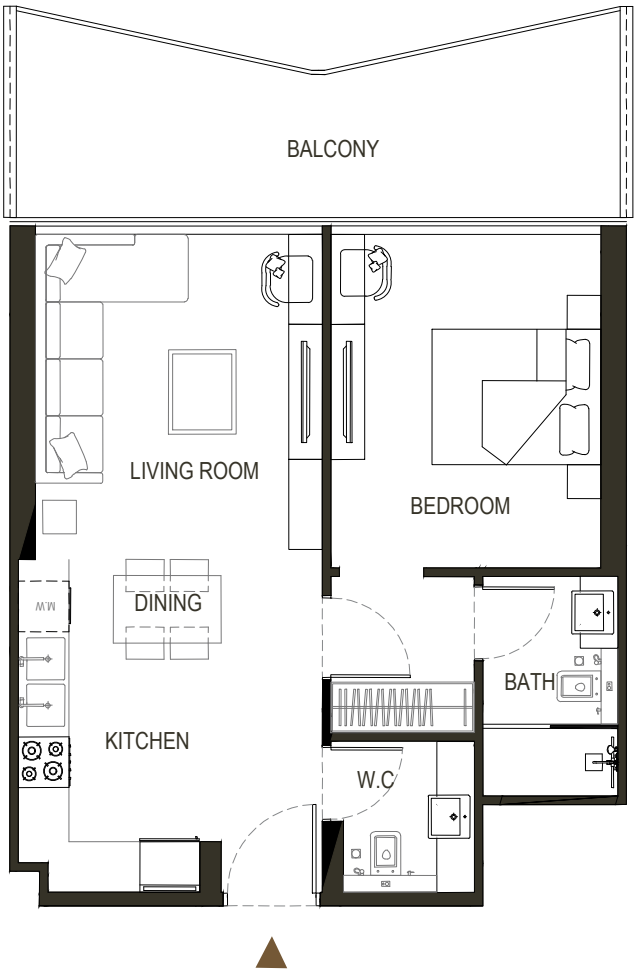


AREA	SQ.M	SQ.FT
SUITE AREA	56.33 m²	606.33 ft²
BALCONY AREA	15.67 m²	168.67 ft²
TOTAL UNIT AREA	72 m²	775 ft²

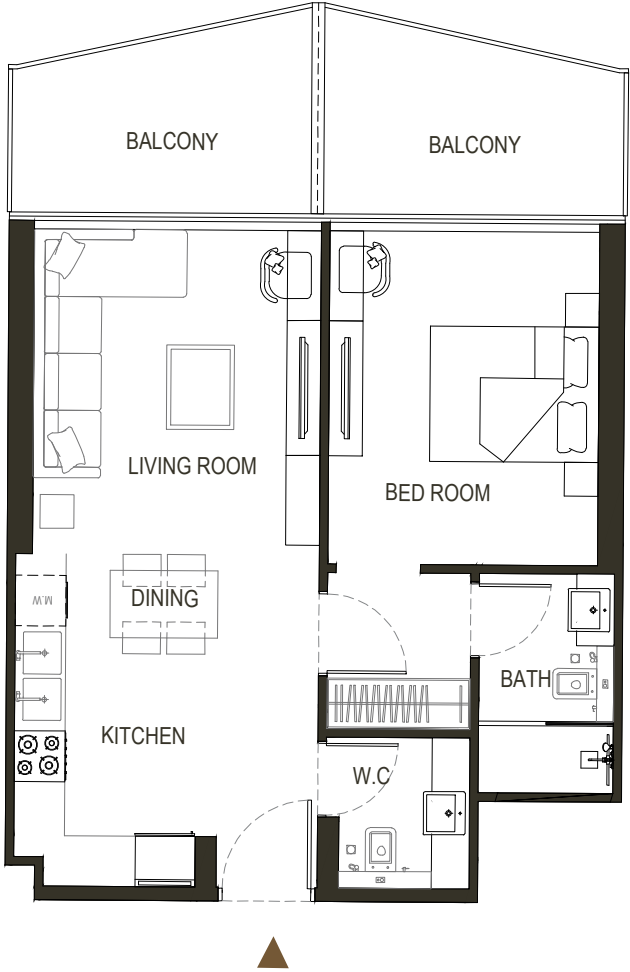
FLAT DESIGN COMPONENTS

MASTER BATH	4 m²
MASTER BEDROOM	16 m²
LIVING	13 m²
KITCHEN & DINING	9 m²
W.C	3 m²
CORRIDOR	5 m²

Disclaimer: 1. All stated dimensions and services whether in relation to the building, common areas or individual units are subject to government and local authority approvals. Final dimensions and services will be stated in your sales and purchase agreement 2. All room dimensions are measured to structural elements and exclude wall finishes and construction tolerances. 3. All dimensions have been provided by our consultant architects. 4. All materials, dimensions and drawings are approximate. Information is subject to change without notice. 5. Actual suite area may vary from the stated area. Drawings are not to scale. The Developer reserves the right to make any revisions whatsoever including for aesthetic purposes.

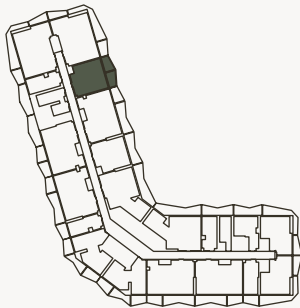


6. Calculation of suite area is measured as the area bounded by the centre line of demising or partition walls separating one unit from another unit, the exterior face of all exterior walls, and the exterior face of the corridor wall enclosing the adjoining unit. 7. Calculation of balcony area is measured as the area bounded by the centre line of demising or partition walls separating one unit from another unit, the outmost face of the enclosing guard and the external face of the adjoining balcony. 8. The units are measured at typical floor in the building. Columns may vary in size depending on the floor level. 9. For each unit type, unit sizes and details might be different and your sales and purchase agreement will contain the actual size of each specific unit.



1 BEDROOM

TYPE - 8



AREA	SQ.M	SQ.FT
SUITE AREA	56.33 m²	606.33 ft²
BALCONY AREA	15.67 m²	168.67 ft²
TOTAL UNIT AREA	72 m²	775 ft²

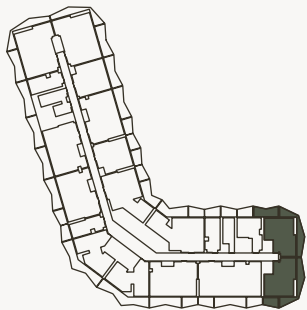
FLAT DESIGN COMPONENTS

MASTER BATH	4 m²
MASTER BEDROOM	16 m²
LIVING	13 m²
KITCHEN & DINING	9 m²
W.C	3 m²
CORRIDOR	5 m²



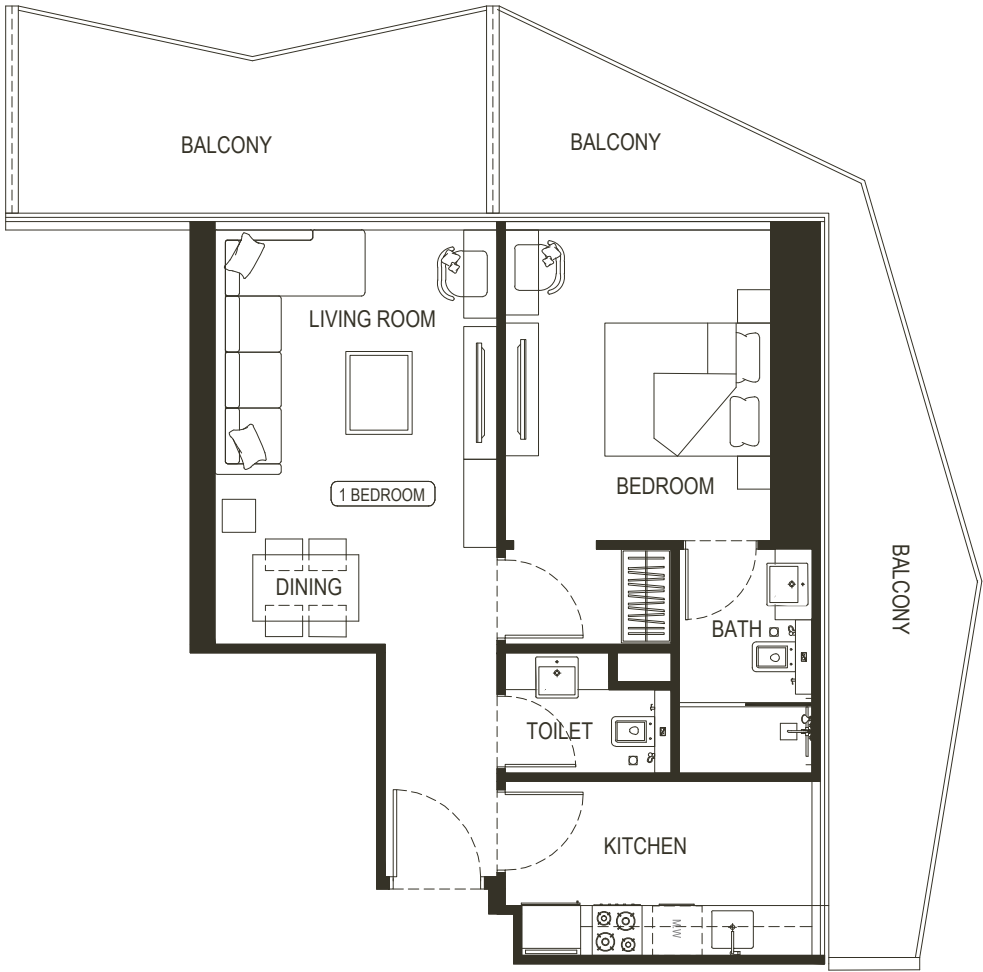
1 BEDROOM

TYPE - 9



AREA	SQ.M	SQ.FT
SUITE AREA	56.87 m²	612.14 ft²
BALCONY AREA	28.12 m²	302.68 ft²
TOTAL UNIT AREA	84.99 m²	914.82 ft²

FLAT DESIGN COMPONENTS		
MASTER BATH		5 m²
MASTER BEDROOM		15 m²
LIVING		17 m²
KITCHEN & DINING		8 m²
W.C		3 m²
CORRIDOR		4 m²



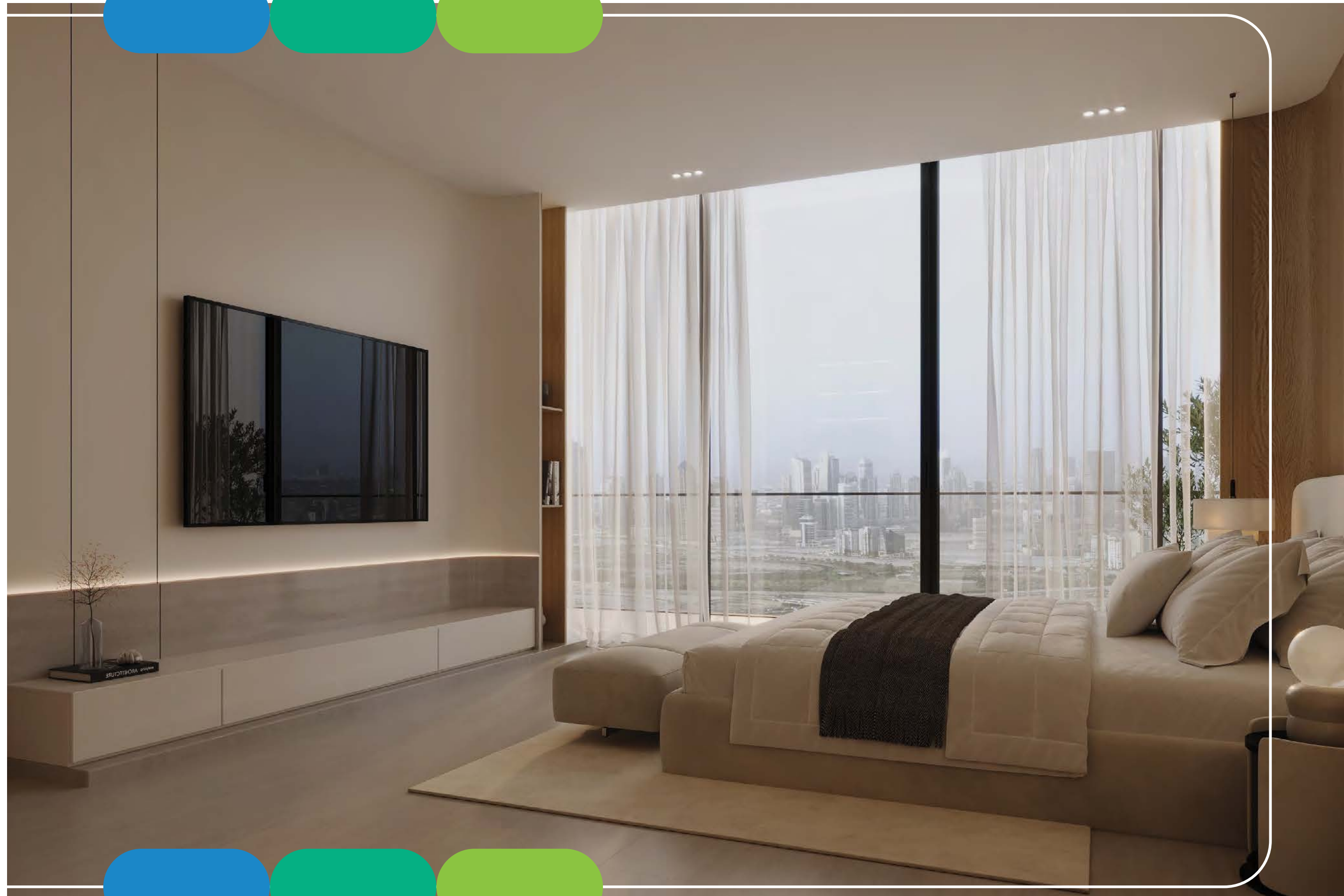
Disclaimer: 1. All stated dimensions and services whether in relation to the building, common areas or individual units are subject to government and local authority approvals. Final dimensions and services will be stated in your sales and purchase agreement 2. All room dimensions are measured to structural elements and exclude wall finishes and construction tolerances. 3. All dimensions have been provided by our consultant architects. 4. All materials, dimensions and drawings are approximate. Information is subject to change without notice. 5. Actual suite area may vary from the stated area. Drawings are not to scale. The Developer reserves the right to make any revisions whatsoever including for aesthetic purposes.







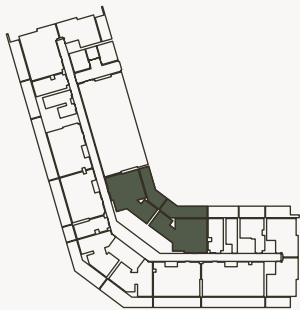






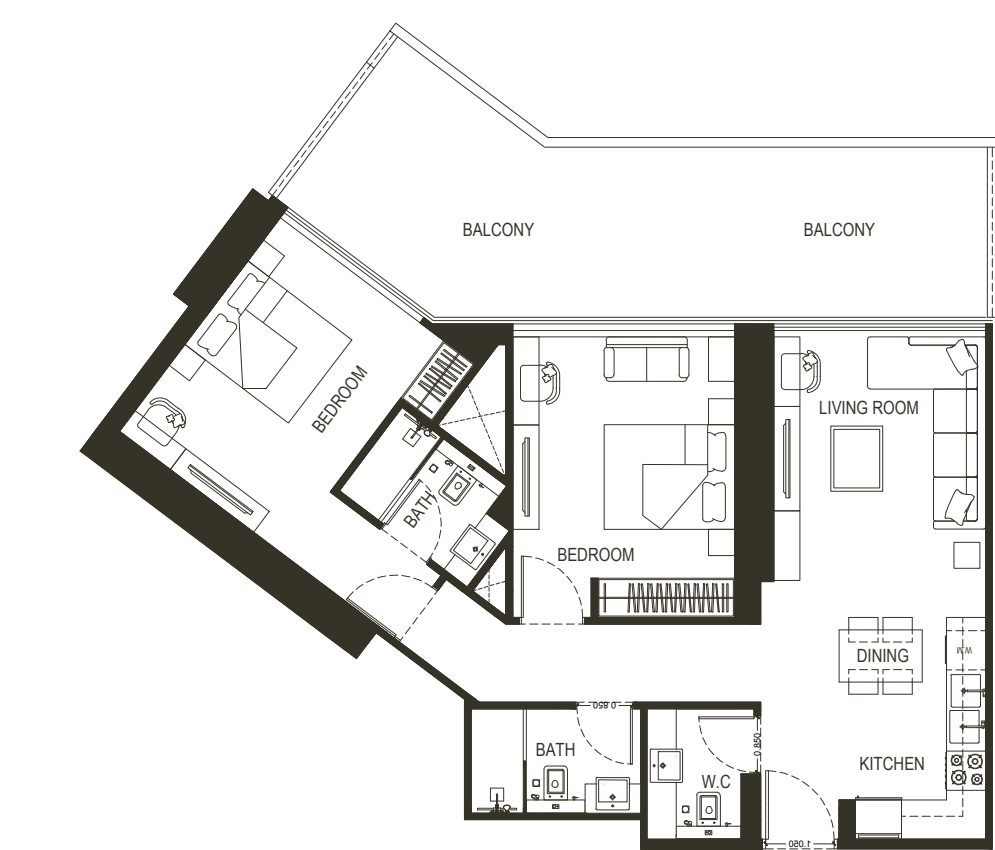
2 BEDROOM

TYPE - 1



AREA	SQ.M	SQ.FT
SUITE AREA	85.76 m²	923.11 ft²
BALCONY AREA	31.23 m²	336.16 ft²
TOTAL UNIT AREA	116.99 m²	1259.27 ft²

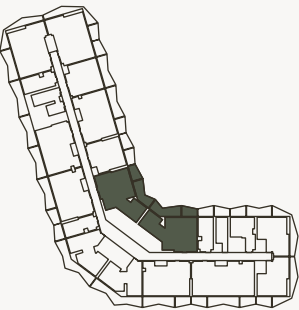
FLAT DESIGN COMPONENTS		
MASTER BATH	4 m²	
MASTER BEDROOM	16 m²	
LIVING	14 m²	
KITCHEN & DINING	12 m²	
BATH	4 m²	
BEDROOM	15 m²	
CORRIDOR	7 m²	
W.C	7 m²	



Disclaimer: 1. All stated dimensions and services whether in relation to the building, common areas or individual units are subject to government and local authority approvals. Final dimensions and services will be stated in your sales and purchase agreement 2. All room dimensions are measured to structural elements and exclude wall finishes and construction tolerances. 3. All dimensions have been provided by our consultant architects. 4. All materials, dimensions and drawings are approximate. Information is subject to change without notice. 5. Actual suite area may vary from the stated area. Drawings are not to scale. The Developer reserves the right to make any revisions whatsoever including for aesthetic purposes.

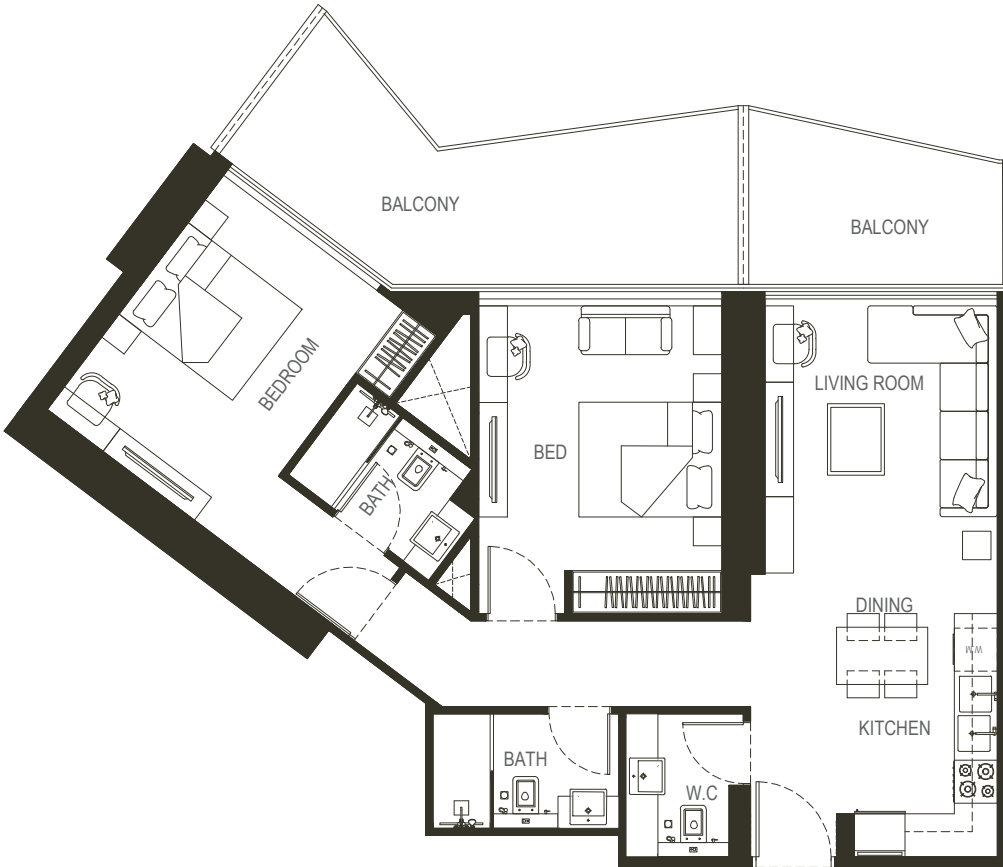
2 BEDROOM

TYPE - 2



AREA	SQ.M	SQ.FT
SUITE AREA	85.57 m²	921.07 ft²
BALCONY AREA	24.91 m²	268.13 ft²
TOTAL UNIT AREA	110.48 m²	1189.20 ft²

FLAT DESIGN COMPONENTS		
MASTER BATH	4 m²	
MASTER BEDROOM	16 m²	
LIVING	14 m²	
KITCHEN & DINING	12 m²	
BATH	4 m²	
BEDROOM	15 m²	
CORRIDOR	7 m²	
W.C	7 m²	



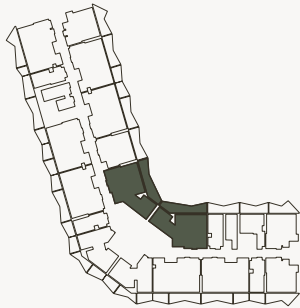
6. Calculation of suite area is measured as the area bounded by the centre line of demising or partition walls separating one unit from another unit, the exterior face of all exterior walls, and the exterior face of the corridor wall enclosing the adjoining unit. 7. Calculation of balcony area is measured as the area bounded by the centre line of demising or partition walls separating one unit from another unit, the outmost face of the enclosing guard and the external face of the adjoining balcony. 8. The units are measured at typical floor in the building. Columns may vary in size depending on the floor level. 9. For each unit type, unit sizes and details might be different and your sales and purchase agreement will contain the actual size of each specific unit.



## FLOOR PLAN

## 2 BEDROOM

### TYPE - 3

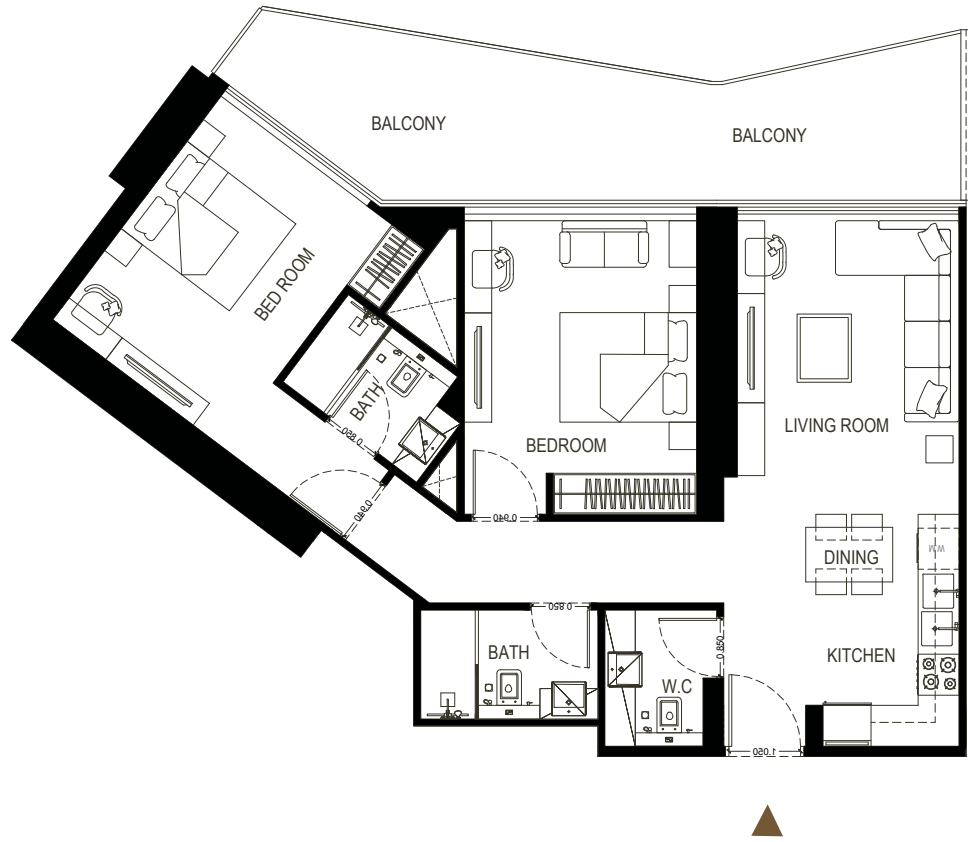


AREA	SQ.M	SQ.FT
SUITE AREA	85.57 m²	921.07 ft²
BALCONY AREA	23.39 m²	251.77 ft²
TOTAL UNIT AREA	108.96 m²	1172.84 ft²

## FLAT DESIGN COMPONENTS

MASTER BATH	4 m <sup>2</sup>
MASTER BEDROOM	16 m <sup>2</sup>
LIVING	14 m <sup>2</sup>
KITCHEN & DINING	12 m <sup>2</sup>
BATH	4 m <sup>2</sup>
BEDROOM	15 m <sup>2</sup>
CORRIDOR	7 m <sup>2</sup>
W.C	7 m <sup>2</sup>

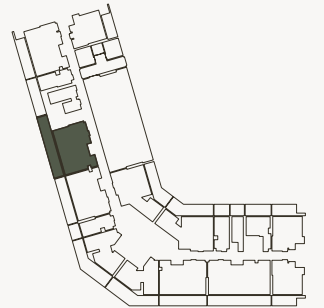
Disclaimer: 1. All stated dimensions and services whether in relation to the building, common areas or individual units are subject to government and local authority approvals. Final dimensions and services will be stated in your sales and purchase agreement 2. All room dimensions are measured to structural elements and exclude wall finishes and construction tolerances. 3. All dimensions have been provided by our consultant architects. 4. All materials, dimensions and drawings are approximate. Information is subject to change without notice. 5. Actual suite area may vary from the stated area. Drawings are not to scale. The Developer reserves the right to make any revisions whatsoever including for aesthetic purposes.



## FLOOR PLAN

## 2 BEDROOM

## TYPE - 4



AREA	SQ.M	SQ.FT
SUITE AREA	84.31 m <sup>2</sup>	907.50 ft <sup>2</sup>
BALCONY AREA	41.68 m <sup>2</sup>	448.63 ft <sup>2</sup>
TOTAL UNIT AREA	111.82 m <sup>2</sup>	1203.62 ft <sup>2</sup>

## FLAT DESIGN COMPONENTS

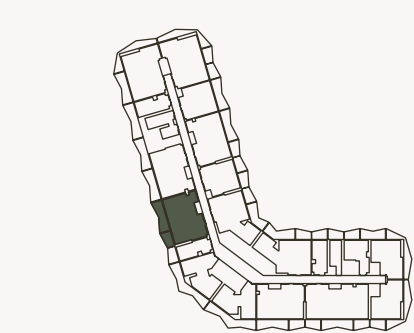
MASTER BATH	5 m <sup>2</sup>
MASTER BEDROOM	19 m <sup>2</sup>
LIVING	13 m <sup>2</sup>
KITCHEN & DINING	9 m <sup>2</sup>
BATH	4 m <sup>2</sup>
BEDROOM	12 m <sup>2</sup>
CORRIDOR	9 m <sup>2</sup>
LAUNDRY	1 m <sup>2</sup>
W.C	3 m <sup>2</sup>

6. Calculation of suite area is measured as the area bounded by the centre line of demising or partition walls separating one unit from another unit, the exterior face of all exterior walls, and the exterior face of the corridor wall enclosing the adjoining unit. 7. Calculation of balcony area is measured as the area bounded by the centre line of demising or partition walls separating one unit from another unit, the outmost face of the enclosing guard and the external face of the adjoining balcony. 8. The units are measured at typical floor in the building. Columns may vary in size depending on the floor level. 9. For each unit type, unit sizes and details might be different and your sales and purchase agreement will contain the actual size of each specific unit.



2 BEDROOM

TYPE - 5

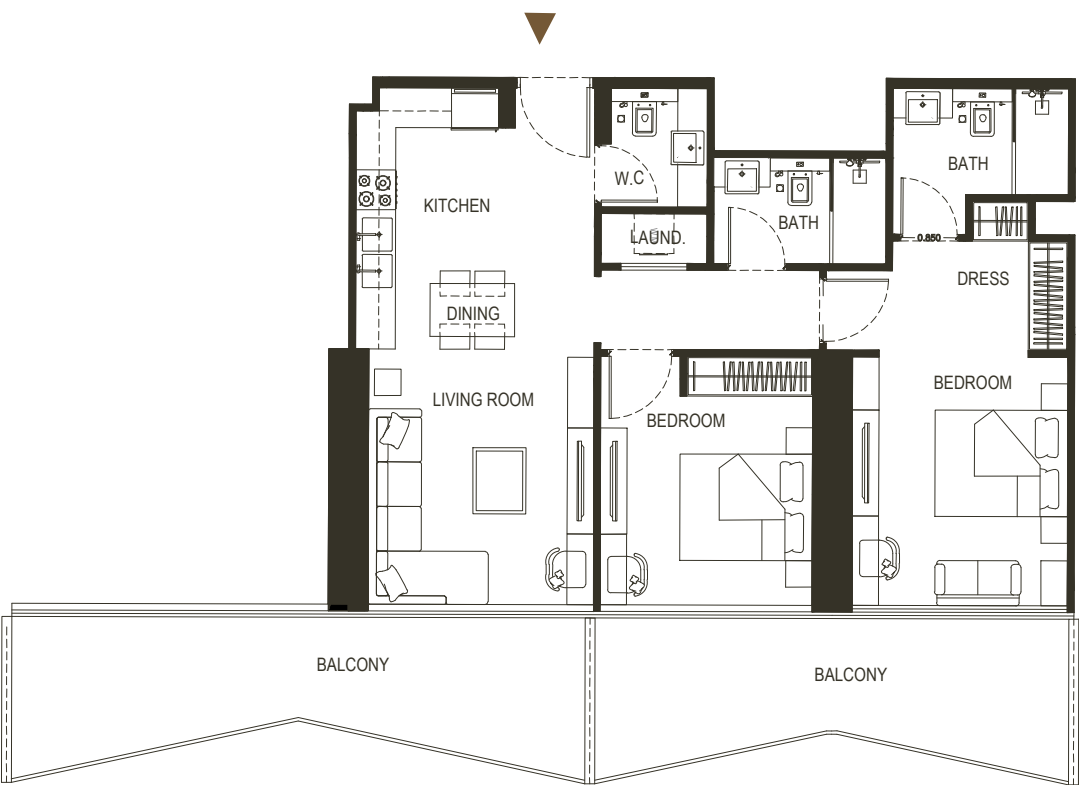
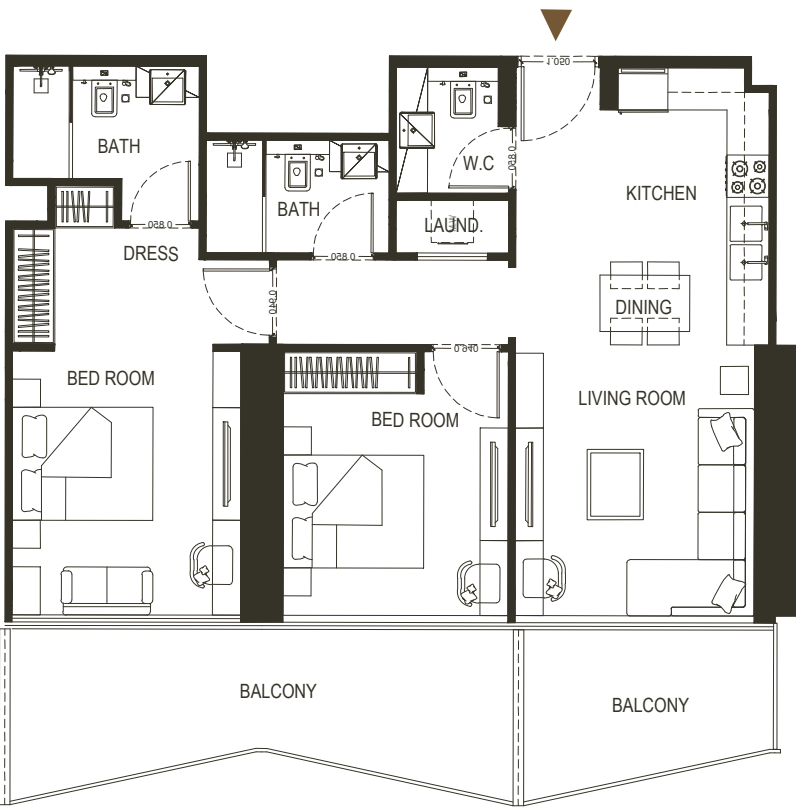


AREA	SQ.M	SQ.FT
SUITE AREA	84.30 m²	907.39 ft²
BALCONY AREA	23.59 m²	253.92 ft²
TOTAL UNIT AREA	107.89 m²	1161.31 ft²

FLAT DESIGN COMPONENTS

MASTER BATH	5 m²
MASTER BEDROOM	19 m²
LIVING	13 m²
KITCHEN & DINING	9 m²
BATH	4 m²
BEDROOM	12 m²
CORRIDOR	9 m²
LAUNDRY	1 m²
W.C	3 m²

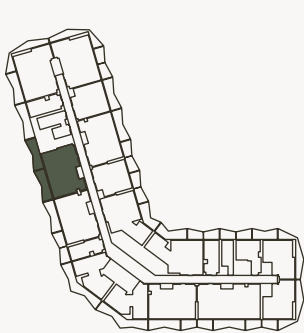
Disclaimer: 1. All stated dimensions and services whether in relation to the building, common areas or individual units are subject to government and local authority approvals. Final dimensions and services will be stated in your sales and purchase agreement 2. All room dimensions are measured to structural elements and exclude wall finishes and construction tolerances. 3. All dimensions have been provided by our consultant architects. 4. All materials, dimensions and drawings are approximate. Information is subject to change without notice. 5. Actual suite area may vary from the stated area. Drawings are not to scale. The Developer reserves the right to make any revisions whatsoever including for aesthetic purposes.



6. Calculation of suite area is measured as the area bounded by the centre line of demising or partition walls separating one unit from another unit, the exterior face of all exterior walls, and the exterior face of the corridor wall enclosing the adjoining unit. 7. Calculation of balcony area is measured as the area bounded by the centre line of demising or partition walls separating one unit from another unit, the outmost face of the enclosing guard and the external face of the adjoining balcony. 8. The units are measured at typical floor in the building. Columns may vary in size depending on the floor level. 9. For each unit type, unit sizes and details might be different and your sales and purchase agreement will contain the actual size of each specific unit.

2 BEDROOM

TYPE - 6



AREA	SQ.M	SQ.FT
SUITE AREA	84.31 m²	907.50 ft²
BALCONY AREA	32.66 m²	351.54 ft²
TOTAL UNIT AREA	116.97 m²	1259.05 ft²

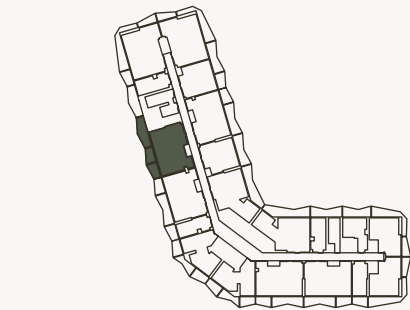
FLAT DESIGN COMPONENTS

MASTER BATH	5 m²
MASTER BEDROOM	19 m²
LIVING	13 m²
KITCHEN & DINING	9 m²
BATH	4 m²
BEDROOM	12 m²
CORRIDOR	9 m²
LAUNDRY	1 m²
W.C	3 m²



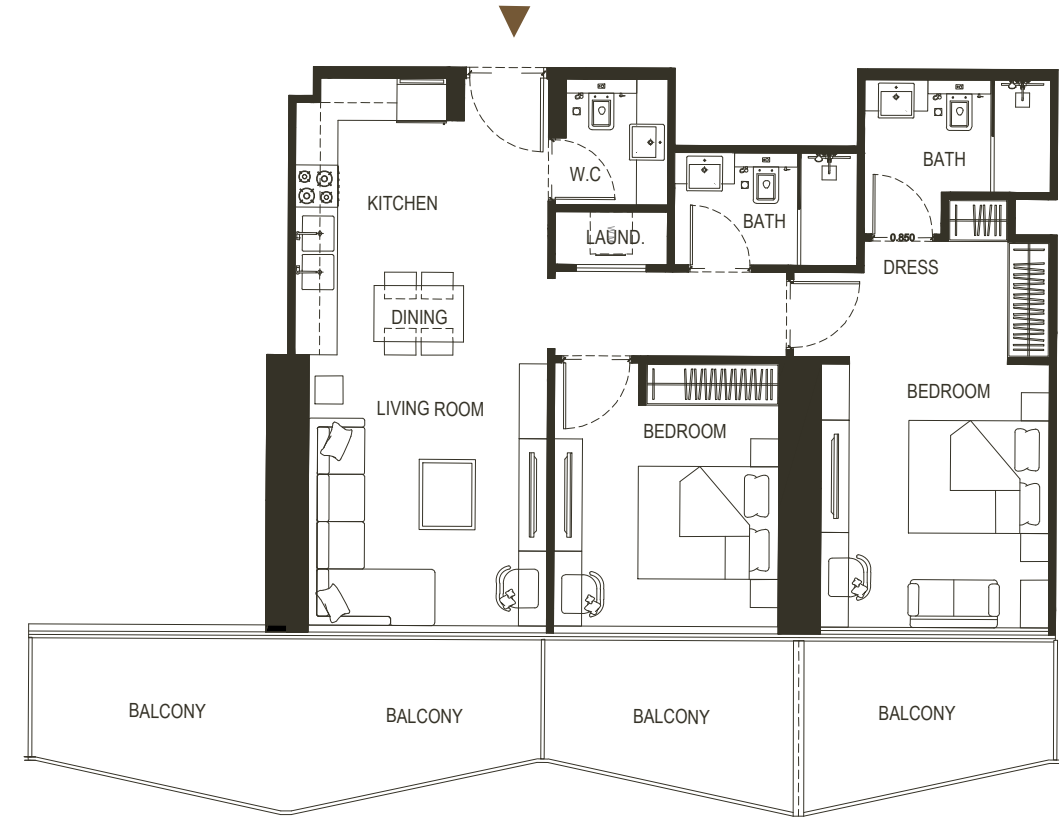
2 BEDROOM

TYPE - 7



AREA	SQ.M	SQ.FT
SUITE AREA	84.31 m <sup>2</sup>	907.50 ft <sup>2</sup>
BALCONY AREA	32.54m <sup>2</sup>	350.25 ft <sup>2</sup>
TOTAL UNIT AREA	116.85 m <sup>2</sup>	1257.76 ft <sup>2</sup>

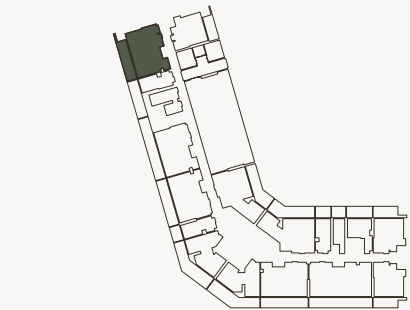
FLAT DESIGN COMPONENTS		
MASTER BATH	5 m <sup>2</sup>	
MASTER BEDROOM	19 m <sup>2</sup>	
LIVING	13 m <sup>2</sup>	
KITCHEN & DINING	9 m <sup>2</sup>	
BATH	4 m <sup>2</sup>	
BEDROOM	12 m <sup>2</sup>	
CORRIDOR	9 m <sup>2</sup>	
LAUNDRY	1 m <sup>2</sup>	
W.C	3 m <sup>2</sup>	



Disclaimer: 1. All stated dimensions and services whether in relation to the building, common areas or individual units are subject to government and local authority approvals. Final dimensions and services will be stated in your sales and purchase agreement 2. All room dimensions are measured to structural elements and exclude wall finishes and construction tolerances. 3. All dimensions have been provided by our consultant architects. 4. All materials, dimensions and drawings are approximate. Information is subject to change without notice. 5. Actual suite area may vary from the stated area. Drawings are not to scale. The Developer reserves the right to make any revisions whatsoever including for aesthetic purposes.

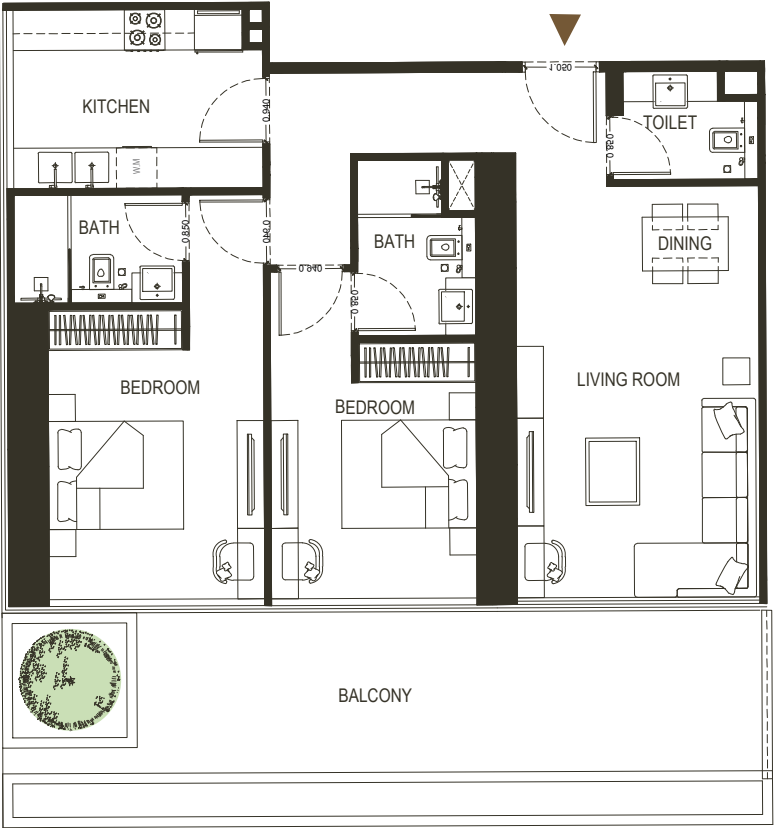
2 BEDROOM

TYPE - 8



AREA	SQ.M	SQ.FT
SUITE AREA	85.15 m <sup>2</sup>	916 ft <sup>2</sup>
BALCONY AREA	28.34 m <sup>2</sup>	305.05 ft <sup>2</sup>
TOTAL UNIT AREA	113.49 m <sup>2</sup>	1221.60 ft <sup>2</sup>

FLAT DESIGN COMPONENTS		
MASTER BATH	5 m <sup>2</sup>	
MASTER BEDROOM	19 m <sup>2</sup>	
LIVING	13 m <sup>2</sup>	
KITCHEN & DINING	9 m <sup>2</sup>	
BATH	4 m <sup>2</sup>	
BEDROOM	12 m <sup>2</sup>	
CORRIDOR	9 m <sup>2</sup>	
LAUNDRY	1 m <sup>2</sup>	
W.C	3 m <sup>2</sup>	

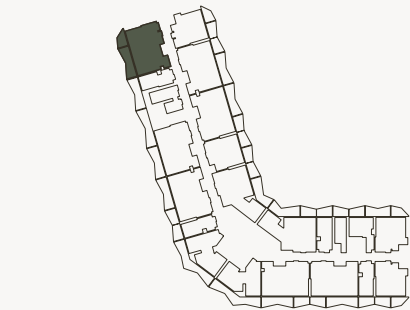


6. Calculation of suite area is measured as the area bounded by the centre line of demising or partition walls separating one unit from another unit, the exterior face of all exterior walls, and the exterior face of the corridor wall enclosing the adjoining unit. 7. Calculation of balcony area is measured as the area bounded by the centre line of demising or partition walls separating one unit from another unit, the outmost face of the enclosing guard and the external face of the adjoining balcony. 8. The units are measured at typical floor in the building. Columns may vary in size depending on the floor level. 9. For each unit type, unit sizes and details might be different and your sales and purchase agreement will contain the actual size of each specific unit.



2 BEDROOM

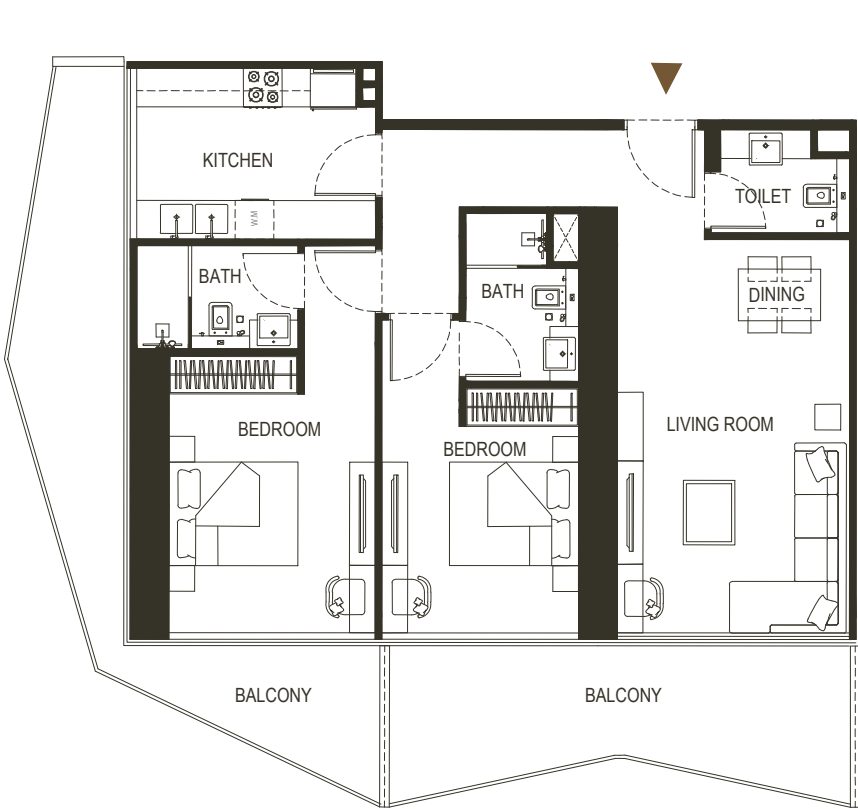
TYPE - 9



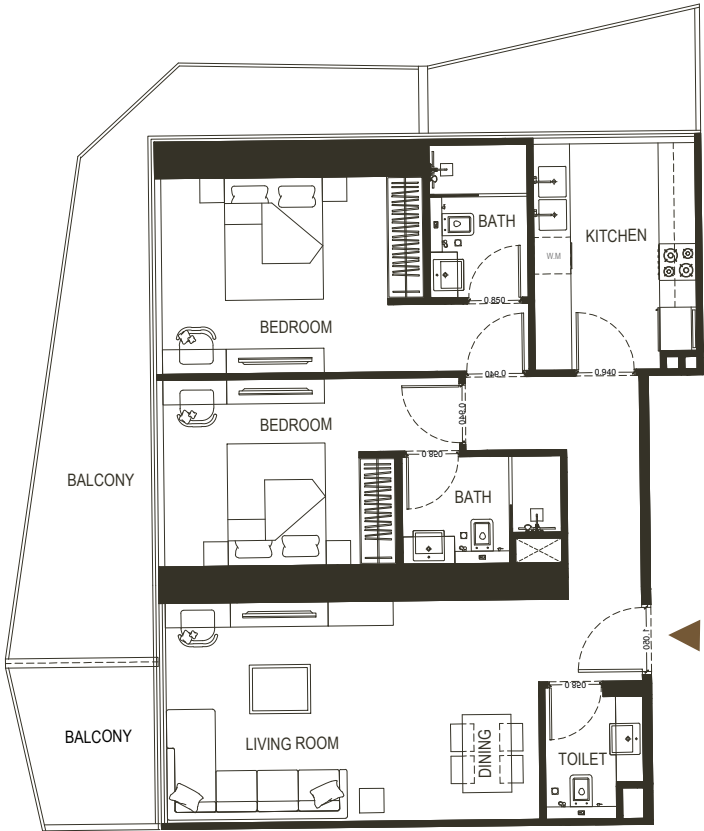
AREA	SQ.M	SQ.FT
SUITE AREA	91.53 m <sup>2</sup>	985.22 ft <sup>2</sup>
BALCONY AREA	36.51 m <sup>2</sup>	392.22 ft <sup>2</sup>
TOTAL UNIT AREA	128.04 m <sup>2</sup>	1378.21 ft <sup>2</sup>

FLAT DESIGN COMPONENTS		
MASTER BATH	4 m <sup>2</sup>	
MASTER BEDROOM	16 m <sup>2</sup>	
LIVING	23 m <sup>2</sup>	
KITCHEN & DINING	10 m <sup>2</sup>	
BATH	4 m <sup>2</sup>	
BEDROOM	13 m <sup>2</sup>	
CORRIDOR	8 m <sup>2</sup>	
W.C	3 m <sup>2</sup>	

Disclaimer: 1. All stated dimensions and services whether in relation to the building, common areas or individual units are subject to government and local authority approvals. Final dimensions and services will be stated in your sales and purchase agreement 2. All room dimensions are measured to structural elements and exclude wall finishes and construction tolerances. 3. All dimensions have been provided by our consultant architects. 4. All materials, dimensions and drawings are approximate. Information is subject to change without notice. 5. Actual suite area may vary from the stated area. Drawings are not to scale. The Developer reserves the right to make any revisions whatsoever including for aesthetic purposes.

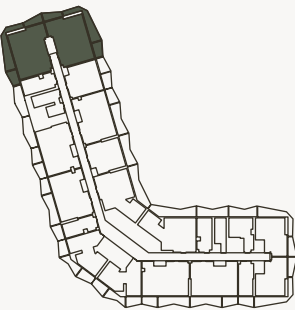


6. Calculation of suite area is measured as the area bounded by the centre line of demising or partition walls separating one unit from another unit, the exterior face of all exterior walls, and the exterior face of the corridor wall enclosing the adjoining unit. 7. Calculation of balcony area is measured as the area bounded by the centre line of demising or partition walls separating one unit from another unit, the outmost face of the enclosing guard and the external face of the adjoining balcony. 8. The units are measured at typical floor in the building. Columns may vary in size depending on the floor level. 9. For each unit type, unit sizes and details might be different and your sales and purchase agreement will contain the actual size of each specific unit.



2 BEDROOM

TYPE - 10



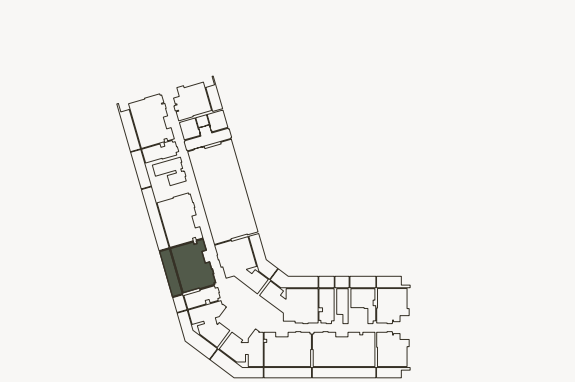
AREA	SQ.M	SQ.FT
SUITE AREA	91.80 m <sup>2</sup>	988.12 ft <sup>2</sup>
BALCONY AREA	36.68 m <sup>2</sup>	394.82 ft <sup>2</sup>
TOTAL UNIT AREA	128.48 m <sup>2</sup>	1382.94 ft <sup>2</sup>

FLAT DESIGN COMPONENTS		
MASTER BATH	4 m <sup>2</sup>	
MASTER BEDROOM	16 m <sup>2</sup>	
LIVING & DINING	23 m <sup>2</sup>	
KITCHEN	10 m <sup>2</sup>	
BATH	4 m <sup>2</sup>	
BEDROOM	13 m <sup>2</sup>	
CORRIDOR	8 m <sup>2</sup>	
W.C	3 m <sup>2</sup>	



2 BEDROOM

TYPE - 11



AREA	SQ.M	SQ.FT
SUITE AREA	84.30 m²	907.40 ft²
BALCONY AREA	27.52 m²	296.22 ft²
TOTAL UNIT AREA	111.82 m²	1203.62 ft²

FLAT DESIGN COMPONENTS

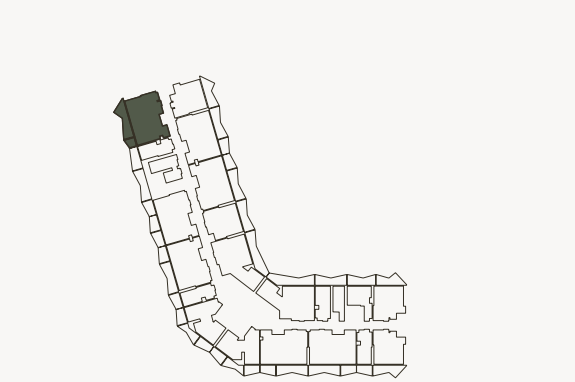
MASTER BATH	5 m²
MASTER BEDROOM	19 m²
LIVING	13 m²
KITCHEN & DINING	9 m²
BATH	4 m²
BEDROOM	12 m²
CORRIDOR	9 m²
LAUNDRY	1 m²
W.C	3 m²



Disclaimer: 1. All stated dimensions and services whether in relation to the building, common areas or individual units are subject to government and local authority approvals. Final dimensions and services will be stated in your sales and purchase agreement 2. All room dimensions are measured to structural elements and exclude wall finishes and construction tolerances. 3. All dimensions have been provided by our consultant architects. 4. All materials, dimensions and drawings are approximate. Information is subject to change without notice. 5. Actual suite area may vary from the stated area. Drawings are not to scale. The Developer reserves the right to make any revisions whatsoever including for aesthetic purposes.

2 BEDROOM

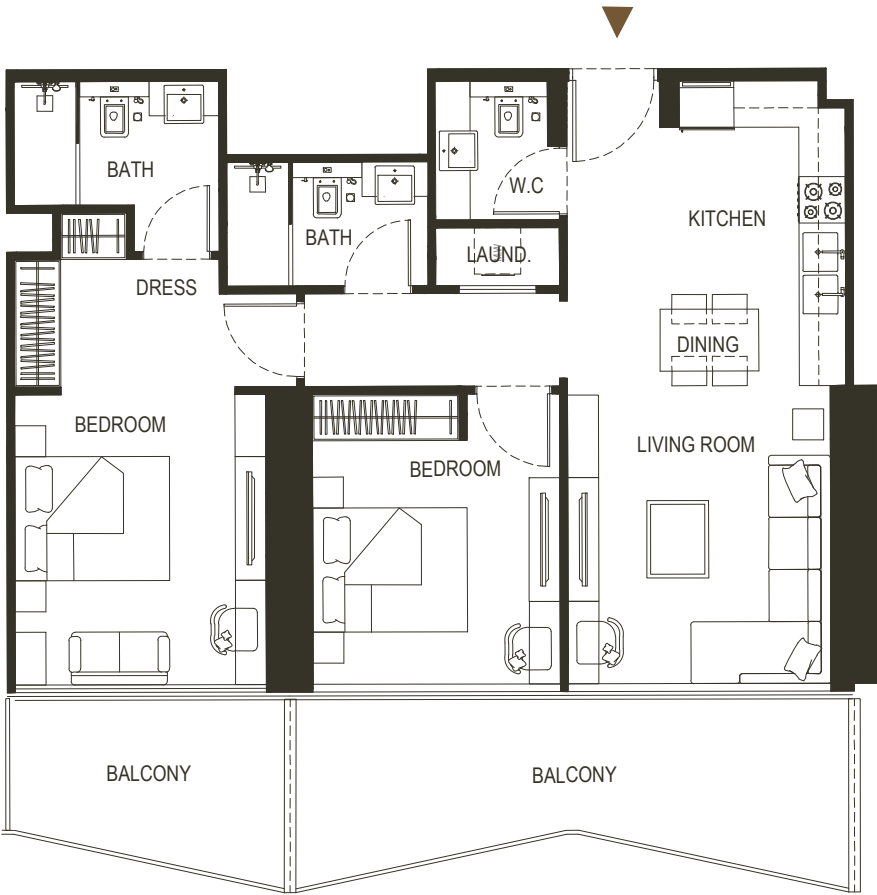
TYPE - 12



AREA	SQ.M	SQ.FT
SUITE AREA	84.30 m²	907.39 ft²
BALCONY AREA	23.53m²	253.27 ft²
TOTAL UNIT AREA	107.83 m²	1160.67 ft²

FLAT DESIGN COMPONENTS

MASTER BATH	5 m²
MASTER BEDROOM	19 m²
LIVING	13 m²
KITCHEN & DINING	9 m²
BATH	4 m²
BEDROOM	12 m²
CORRIDOR	9 m²
LAUNDRY	1 m²
W.C	3 m²

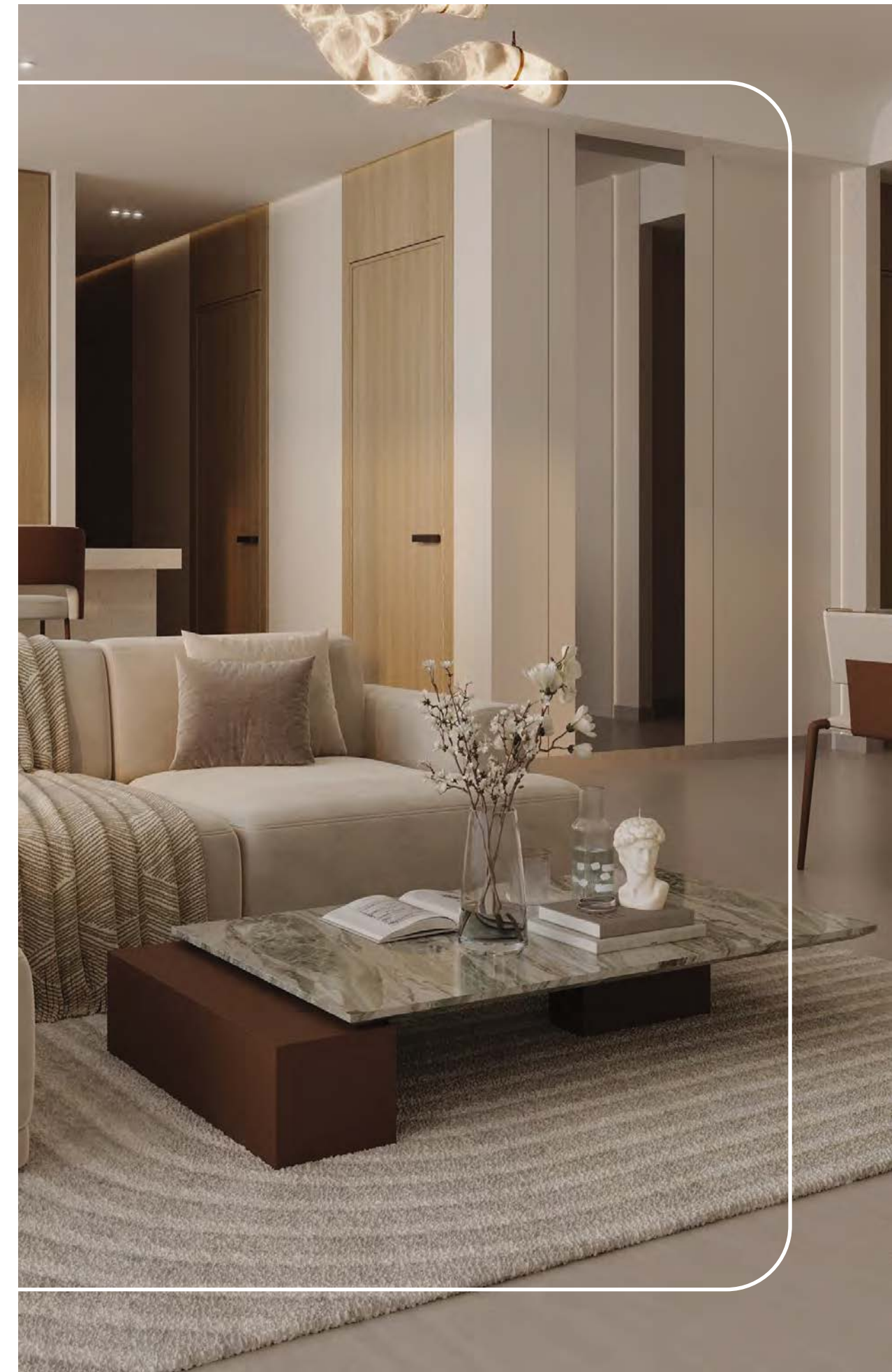


6. Calculation of suite area is measured as the area bounded by the centre line of demising or partition walls separating one unit from another unit, the exterior face of all exterior walls, and the exterior face of the corridor wall enclosing the adjoining unit. 7. Calculation of balcony area is measured as the area bounded by the centre line of demising or partition walls separating one unit from another unit, the outmost face of the enclosing guard and the external face of the adjoining balcony. 8. The units are measured at typical floor in the building. Columns may vary in size depending on the floor level. 9. For each unit type, unit sizes and details might be different and your sales and purchase agreement will contain the actual size of each specific unit.





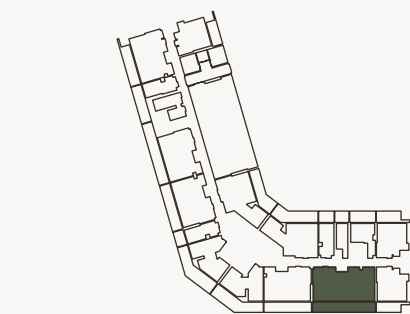






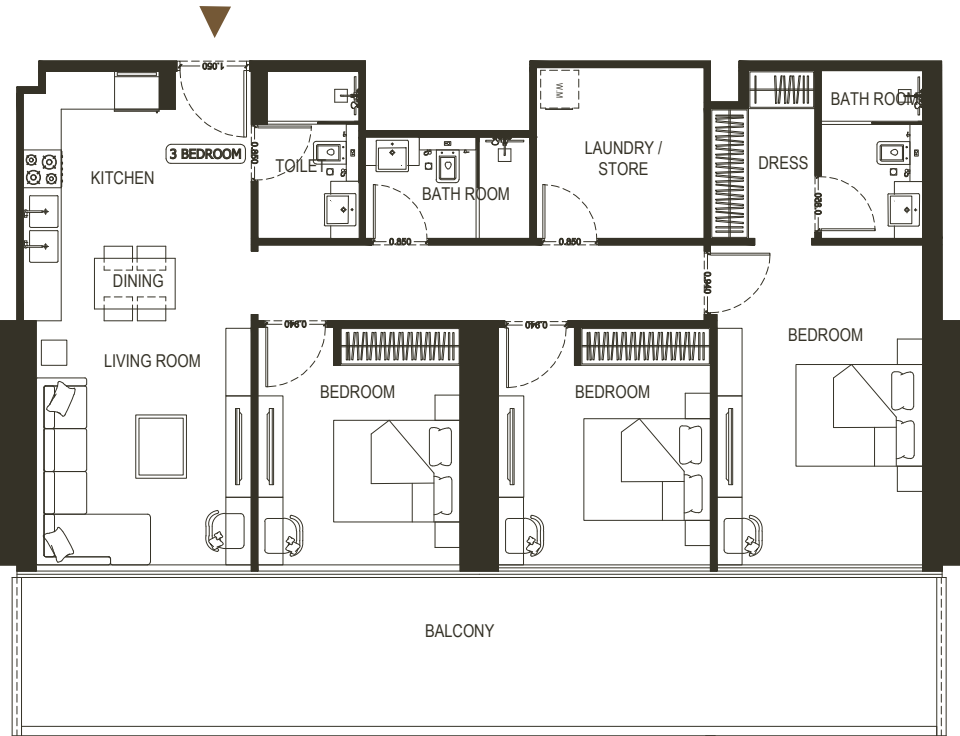
3 BEDROOM

TYPE - 1



AREA	SQ.M	SQ.FT
SUITE AREA	113.10 m <sup>2</sup>	1217.40 ft <sup>2</sup>
BALCONY AREA	36.31 m <sup>2</sup>	390.84 ft <sup>2</sup>
TOTAL UNIT AREA	149.41 m <sup>2</sup>	1608.24 ft <sup>2</sup>

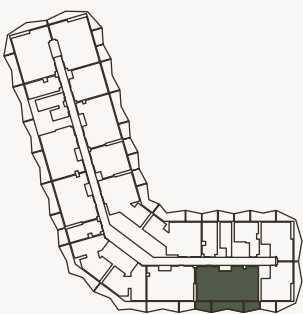
FLAT DESIGN COMPONENTS		
MASTER BATH	4 m <sup>2</sup>	
MASTER BEDROOM	21 m <sup>2</sup>	
LIVING	13 m <sup>2</sup>	
KITCHEN & DINING	14 m <sup>2</sup>	
BATH	4 m <sup>2</sup>	
BEDROOM	12 m <sup>2</sup>	
BEDROOM	13 m <sup>2</sup>	
CORRIDOR	9 m <sup>2</sup>	
TOILET	4 m <sup>2</sup>	
LAUNDRY / STORE	7 m <sup>2</sup>	



Disclaimer: 1. All stated dimensions and services whether in relation to the building, common areas or individual units are subject to government and local authority approvals. Final dimensions and services will be stated in your sales and purchase agreement 2. All room dimensions are measured to structural elements and exclude wall finishes and construction tolerances. 3. All dimensions have been provided by our consultant architects. 4. All materials, dimensions and drawings are approximate. Information is subject to change without notice. 5. Actual suite area may vary from the stated area. Drawings are not to scale. The Developer reserves the right to make any revisions whatsoever including for aesthetic purposes.

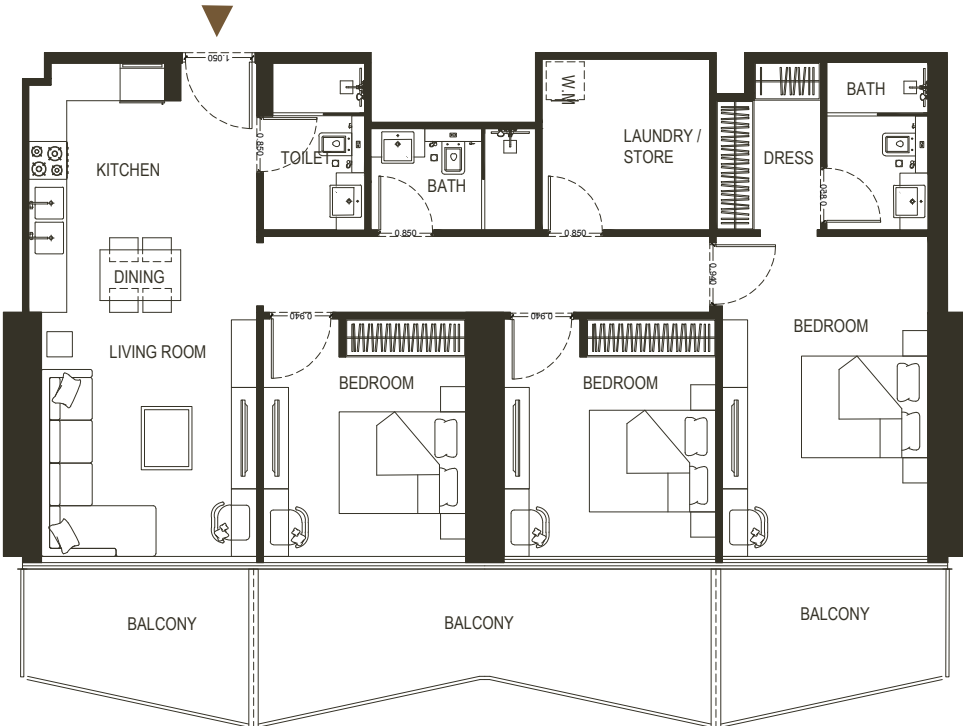
3 BEDROOM

TYPE - 2



AREA	SQ.M	SQ.FT
SUITE AREA	113.18 m <sup>2</sup>	1218.25 ft <sup>2</sup>
BALCONY AREA	31.53 m <sup>2</sup>	339.38 ft <sup>2</sup>
TOTAL UNIT AREA	144.71 m <sup>2</sup>	1557.64 ft <sup>2</sup>

FLAT DESIGN COMPONENTS		
MASTER BATH	4 m <sup>2</sup>	
MASTER BEDROOM	21 m <sup>2</sup>	
LIVING	13 m <sup>2</sup>	
KITCHEN & DINING	14 m <sup>2</sup>	
BATH	4 m <sup>2</sup>	
BEDROOM	12 m <sup>2</sup>	
BEDROOM	13 m <sup>2</sup>	
CORRIDOR	9 m <sup>2</sup>	
TOILET	4 m <sup>2</sup>	
LAUNDRY / STORE	7 m <sup>2</sup>	



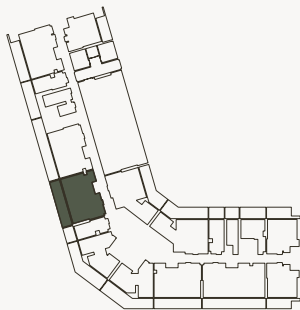
6. Calculation of suite area is measured as the area bounded by the centre line of demising or partition walls separating one unit from another unit, the exterior face of all exterior walls, and the exterior face of the corridor wall enclosing the adjoining unit. 7. Calculation of balcony area is measured as the area bounded by the centre line of demising or partition walls separating one unit from another unit, the outmost face of the enclosing guard and the external face of the adjoining balcony. 8. The units are measured at typical floor in the building. Columns may vary in size depending on the floor level. 9. For each unit type, unit sizes and details might be different and your sales and purchase agreement will contain the actual size of each specific unit.



FLOOR PLAN

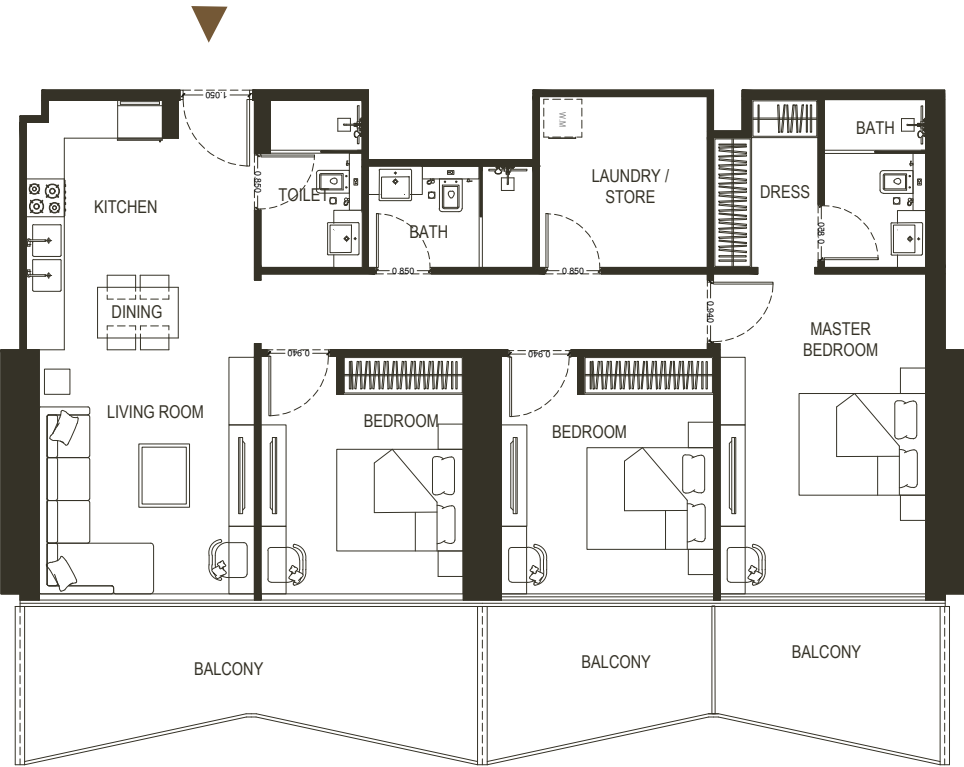
3 BEDROOM

TYPE - 3



AREA	SQ.M	SQ.FT
SUITE AREA	113.18 m <sup>2</sup>	1218.25 ft <sup>2</sup>
BALCONY AREA	31.52 m <sup>2</sup>	339.28 ft <sup>2</sup>
TOTAL UNIT AREA	144.70 m <sup>2</sup>	1557.53 ft <sup>2</sup>

FLAT DESIGN COMPONENTS		
MASTER BATH		4 m <sup>2</sup>
MASTER BEDROOM		21 m <sup>2</sup>
LIVING		13 m <sup>2</sup>
KITCHEN & DINING		14 m <sup>2</sup>
BATH		4 m <sup>2</sup>
BEDROOM		12 m <sup>2</sup>
BEDROOM		13 m <sup>2</sup>
CORRIDOR		9 m <sup>2</sup>
TOILET		4 m <sup>2</sup>
LAUNDRY / STORE		7 m <sup>2</sup>



Disclaimer: 1. All stated dimensions and services whether in relation to the building, common areas or individual units are subject to government and local authority approvals. Final dimensions and services will be stated in your sales and purchase agreement 2. All room dimensions are measured to structural elements and exclude wall finishes and construction tolerances. 3. All dimensions have been provided by our consultant architects. 4. All materials, dimensions and drawings are approximate. Information is subject to change without notice. 5. Actual suite area may vary from the stated area. Drawings are not to scale. The Developer reserves the right to make any revisions whatsoever including for aesthetic purposes.











# BINGHATTI HAVEN

FOR MORE INFORMATION PLEASE CONTACT



REAL ESTATE  
STAY AHEAD, INVEST SMART

📞 +971 55 476 7630  
☎️ +971 4 368 7878  
✉️ info@afsrealestate.com  
🌐 www.afsrealestate.com



DUBRICKS  
POSSIBILITIES ARE LIMITLESS

📞 +971 50 674 2020  
☎️ +971 4 397 7731  
✉️ info@dubricks.com  
🌐 www.dubricks.com

